

Activity Name	Original Duration	Planned Start	Planned Finish	2011				2012				2013				2014				2015				2016	
				Q3	Q4	Q1	Q2	Q3	Q4	Q1	Q2	Q3	Q4	Q1	Q2	Q3	Q4	Q1	Q2	Q3	Q4	Q1	Q2		
HY/2009/15 - CWB TUNNEL (CBTS SECTION)																									
SUBMISSIONS COMPLYING WITH EPs																									
EM&A Manual (rely on the Master EP's submission EP-364/2009/A Condition 2.9)																									
Baseline Monitoring Report (rely on the Master EP's submission EP-364/2009 Condition 3.3)																									
Monthly EM&A (rely on the masters EP's Submission, EP-364/2009/A Condition 3.4)																									
A dedicated website (rely on the master EP's submission, EP-364/2009/A Condition 4.2)																									
Management organization of main construction companies (FEP Condition 2.6)	1d	02-Oct-10	02-Oct-10																						
Work Schedule (FEP Condition 2.7)	1d	27-Oct-10	27-Oct-10																						
Location Plan (FEP Condition 2.8)	1d	27-Oct-10	27-Oct-10																						
Noise Management plan (FEP Condition 2.9)	1d	27-Oct-10	27-Oct-10																						
Landscape plan (FEP condition 2.10)	1d	31-Jan-11	31-Jan-11																						
EAST VENTILATION ADIT																									
CCT @ Portion 1, 2, 4, 6, 22	1315d	27-Sep-10	03-May-14																						
EV Adit @ Portion 4-Advance Works	526d	27-Sep-10	05-Mar-12																						
EV Adit Portion 1, 2, 6, 22	26d	22-Dec-11	16-Jan-12																						
EV Adit-based on Conforming Design	323d	15-Feb-12	02-Jan-13																						
TCBR1E (TS1 Area)																									
Diaphragm Wall Construction (incl. SI, & tests after completion)	107d	26-Apr-11	10-Aug-11																						
Excavation & Lateral Support, ELS	99d	16-Jul-11	22-Oct-11																						
Cut & Cover Tunnel Construction (incl. backfill)	78d	22-Oct-11	07-Jan-12																						
OHVD and Cable Trough (access from Portion 22)	76d	18-Dec-13	03-Mar-14																						
TCBR2 + TCBR3 (TS2 Area)																									
Diaphragm Wall Construction	118d	06-Jul-12	31-Oct-12																						
Excavation & Lateral Support, ELS	248d	06-Jul-12	10-Mar-13																						
Cut & Cover Tunnel Construction	164d	11-Mar-13	21-Aug-13																						
OHVD Cable Trough (Access from Portion 22)	150d	05-Aug-13	01-Jan-14																						
TCBR1W (TS4 Area)																									
Diaphragm Wall Construction	148d	28-Jun-11	22-Nov-11																						
Excavation & Lateral Support, ELS	319d	26-Jun-11	11-May-12																						
Landing Steps - Demolition/Reconstruct as footpath	40d	28-Jun-11	23-Aug-11																						

- ◆ Milestone
- ◆ Milestone
- ▬ Remaining Work
- ▬ Critical Remaining Work
- ▬ Actual Work

1 of 2

China State Construction Engineering (Hong Kong) Ltd.

Contract No. HY/2009/15 - Central Wan Chai By Pass - Tunnel

(CBTS Section)

Prepared by William Caluza			
Date	Revision	Checked	Approved
14-Mar-11	Revision C	ST	KL
	File: GC01a		
	(Layout:HY/2009/15: CWB - Summary)		

中國建築工程(香港)有限公司

CHINA STATE CONSTRUCTION ENGINEERING (HONG KONG) LTD

Activity Name	Original Duration	Planned Start	Planned Finish	2011					2012				2013				2014				2015				2016	
				Q3	Q4	Q1	Q2	Q3	Q4	Q1	Q2	Q3	Q4	Q1	Q2	Q3	Q4	Q1	Q2	Q3	Q4	Q1	Q2	Q3	Q4	Q1
Rock Excavation	235d	25-Apr-12	15-Dec-12																							
ME4-Diaphragm Wall	114d	10-May-12	19-Oct-12																							
AS Logistics Area for Mined Tunneling Works	174d	01-Jun-12	07-Feb-13																							
ME4-ELS Works	212d	01-Jun-12	02-Apr-13																							
SCL Entrusted Works	291d	18-Jul-12	08-Sep-13																							
Cut & Cover Tunnel Construction (w/o TS4 +)	111d	17-Dec-12	06-Apr-13																							
ME4-RC Structure	146d	28-Jan-13	21-Aug-13																							
OHVD and Cable Trough (Access from TZ5/TPCWAE/TPCWAW)	180d	17-Jun-13	13-Dec-13																							
MINED TUNNEL																										
CHT Protection Works @ location A, B, C	342d	27-Sep-10	01-Feb-12																							
Tunnel works from West Portal (access from TPCWAE& TZ5	418d	12-Mar-12	30-Oct-13																							
Tunnel Works from East Portal (Access from TS4 Area)	214d	30-Mar-12	01-Feb-13																							
Tunnel OHVD & Cable Trough	384d	02-Dec-13	22-May-15																							
TPCWAE																										
Drainage Diversion works along Hung Hing Road (Portion 19)	176d	15-Oct-10	24-Jun-11																							
Diaphragm Wall Construction	147d	20-May-11	13-Oct-11																							
Excavation & Lateral Support, ELS	421d	20-May-11	13-Jul-12																							
Rock Excavation	208d	12-Mar-12	03-Oct-12																							
AS Logistics Area for Mined Tunneling works	342d	12-May-12	18-Apr-13																							
Cut & Cover Tunnel Construction	130d	28-Jan-13	06-Jun-13																							
OHVD and Cable Trough (Access from TZ5/TPCWAW)	182d	18-Feb-15	18-Aug-15																							
TPCWAW & PORTION 11																										
Diaphragm Wall Construction + Portion 11	222d	25-Oct-13	03-Jun-14																							
Excavation & Lateral Support, ELS	478d	25-Oct-13	14-Feb-15																							
Cut & Cover Tunnel Construction	143d	30-Dec-14	21-May-15																							
OHVD and Cable Trough Installation (Access from Portion 11)	235d	22-May-15	11-Jan-16																							

- ◆ Milestone
- ◆ Milestone
- ▬ Remaining Work
- ▬ Critical Remaining Work
- ▬ Actual Work

2 of 2

China State Construction Engineering (Hong Kong) Ltd.
Contract No. HY/2009/15 - Central Wan Chai By Pass - Tunnel
(CBTS Section)

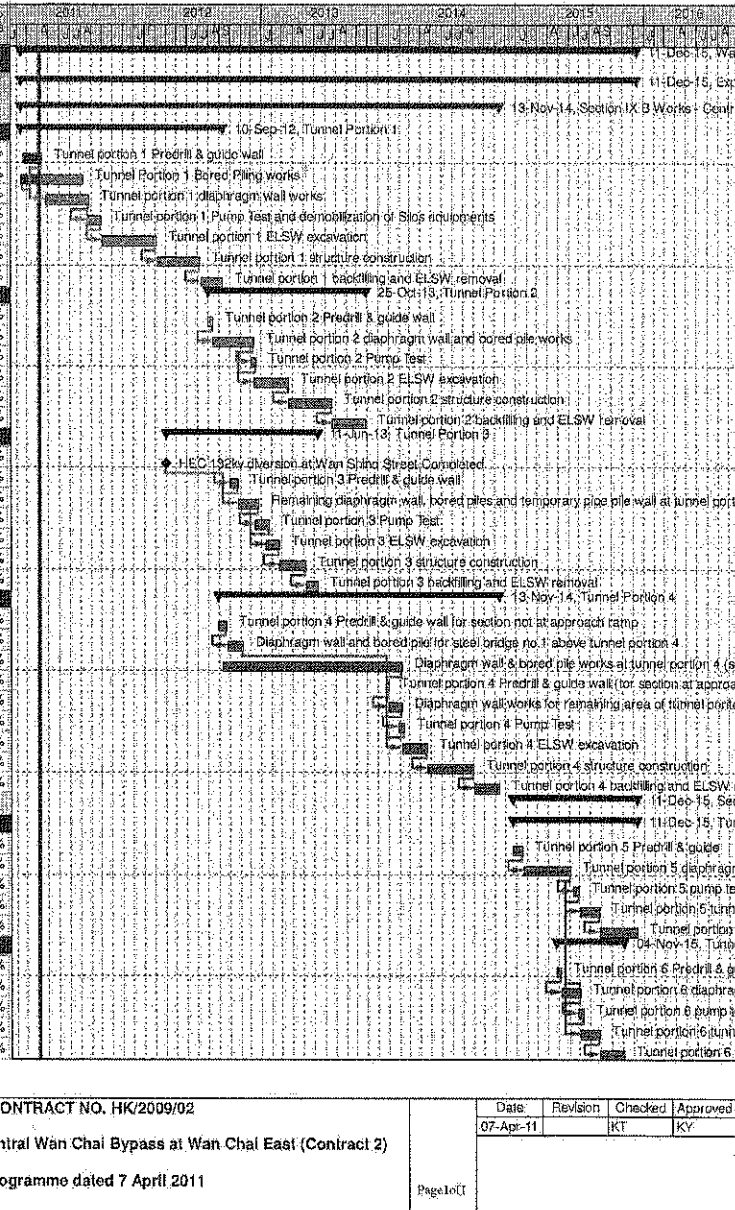
Prepared by William Caluza			
Date	Revision	Checked	Approved
14-Mar-11	Revision C	ST	KL
	File: 0001a		
	(Layout: HY/2009/15: CWB - Summary)		



Wan Chai Development Phase II - Central - Wan Chai
Bypass at Wan Chai East CONTRACT HK/2009/02

CHUN WO - CRGL JV

Activity ID	Activity Name	OD	Start	Finish	% Planned	2011	2012	2013	2014	2015	2016
Wan Chai Development Phase II - Central - Wan Chai Bypass at Wan Chai East											
Expanded and More Detailed Initial Works Programme											
Section IX B Works - Central - Wan Chai Bypass Tunnel Structure from chainage 3400 to eastern tunnel											
Tunnel Portion 1											
S9B-T1-0005	Tunnel portion 1 Predrill & guide wall	10	18-Feb-11	13-Apr-11	40%						
S9B-T1-0007	Tunnel Portion 1 Bored Piling works	105	09-Feb-11	08-Aug-11	0%						
S9B-T1-0010	Tunnel portion 1 diaphragm wall works	105	26-Apr-11	27-Aug-11	0%						
S9B-T1-0015	Tunnel portion 1 Pump Test and demobilization of Slos equipments	35	20-Aug-11	30-Sep-11	0%						
S9B-T1-0020	Tunnel portion 1 ELSW excavation	130	03-Oct-11	07-Mar-12	0%						
S9B-T1-0030	Tunnel portion 1 structure construction	100	09-Mar-12	09-Jul-12	0%						
S9B-T1-0040	Tunnel portion 1 backfilling and ELSW removal	54	10-Jul-12	10-Sep-12	0%						
Tunnel Portion 2											
S9B-T2-0105	Tunnel portion 2 Predrill & guide wall	10	02-Aug-12	13-Aug-12	0%						
S9B-T2-0010	Tunnel portion 2 diaphragm wall and bored pile works	100	14-Aug-12	10-Dec-12	0%						
S9B-T2-0015	Tunnel portion 2 Pump Test	14	03-Dec-12	18-Dec-12	0%						
S9B-T2-0020	Tunnel portion 2 ELSW excavation	80	11-Dec-12	19-Mar-13	0%						
S9B-T2-0030	Tunnel portion 2 structure construction	100	20-Mar-13	22-Jul-13	0%						
S9B-T2-0040	Tunnel portion 2 backfilling and ELSW removal	80	23-Jul-13	25-Oct-13	0%						
Tunnel Portion 3											
S9B-T3-0005	HEC 132kv diversion at Wan Shing Street Completed	0	01-Apr-12*		0%						
S9B-T3-0008	Tunnel portion 3 Predrill & guide wall	20	02-Oct-12	25-Oct-12	0%						
S9B-T3-0010	Remaining diaphragm wall, bored piles and temporary pipe pile wall at tunnel portion 3.	50	25-Oct-12	22-Dec-12	0%						
S9B-T3-0015	Tunnel portion 3 Pump Test	30	15-Dec-12	22-Jan-13	0%						
S9B-T3-0020	Tunnel portion 3 ELSW excavation	30	15-Jan-13	20-Feb-13	0%						
S9B-T3-0030	Tunnel portion 3 structure construction	80	21-Feb-13	08-May-13	0%						
S9B-T3-0040	Tunnel portion 3 backfilling and ELSW removal	30	07-May-13	11-Jun-13	0%						
Tunnel Portion 4											
S9B-T4-0005	Tunnel portion 4 Predrill & guide wall for section not at approach ramp	21	30-Aug-12	22-Sep-12	0%						
S9B-T4-0010	Diaphragm wall and bored pile for steel bridge no.1 above tunnel portion 4	40	24-Sep-12	10-Nov-12	0%						
S9B-T4-0020	Diaphragm wall & bored pile works at tunnel portion 4 (section not at approach ramp)	420	11-Sep-12	05-Feb-14	0%						
S9B-T4-0025	Tunnel portion 4 Predrill & guide wall (for section at approach ramp)	5	23-Dec-13	30-Dec-13	0%						
S9B-T4-0030	Diaphragm wall works for remaining area of tunnel portion 4 (for section at approach ramp)	30	31-Dec-13	06-Feb-14	0%						
S9B-T4-0035	Tunnel portion 4 Pump Test	14	28-Jan-14	14-Feb-14	0%						
S9B-T4-0040	Tunnel portion 4 ELSW excavation	60	07-Feb-14	19-Apr-14	0%						
S9B-T4-0050	Tunnel portion 4 structure construction	110	22-Apr-14	01-Sep-14	0%						
S9B-T4-0060	Tunnel portion 4 backfilling and ELSW removal	60	02-Sep-14	13-Nov-14	0%						
Section X Works - Central - Wan Chai Bypass Tunnel Structure from western tunnel to chainage 3400											
Tunnel Portion 5											
S10-T5-0005	Tunnel portion 5 Predrill & guide	21	23-Dec-14	19-Jan-15	0%						
S10-T5-0010	Tunnel portion 5 diaphragm wall & bored pile works	110	20-Jan-15	04-Jun-15	0%						
S10-T5-0015	Tunnel portion 5 pump test	14	13-Jun-15	30-Jun-15	0%						
S10-T5-0020	Tunnel portion 5 tunnel ELSW excavation	45	04-Jul-15	25-Aug-15	0%						
S10-T5-0030	Tunnel portion 5 tunnel structure construction	90	26-Aug-15	11-Dec-15	0%						
Tunnel Portion 6											
S10-T6-0040	Tunnel portion 6 Predrill & guide	12	24-Apr-15	08-May-15	0%						
S10-T6-0050	Tunnel portion 6 diaphragm wall & bored pile works at Area 10	45	09-May-15	09-Jul-15	0%						
S10-T6-0055	Tunnel portion 6 pump test	14	25-Jun-15	11-Jul-15	0%						
S10-T6-0060	Tunnel portion 6 tunnel ELSW excavation at Area 10	45	04-Jul-15	26-Aug-15	0%						
S10-T6-0070	Tunnel portion 6 tunnel structure construction at Area 10	58	26-Aug-15	04-Nov-15	0%						



CEDD CONTRACT NO. HK/2009/02
Wan Chai Development Phase II - Central Wan Chai Bypass at Wan Chai East (Contract 2)
 Revised Programme dated 7 April 2011

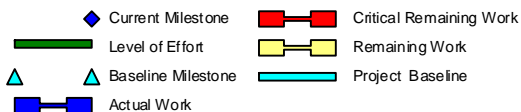
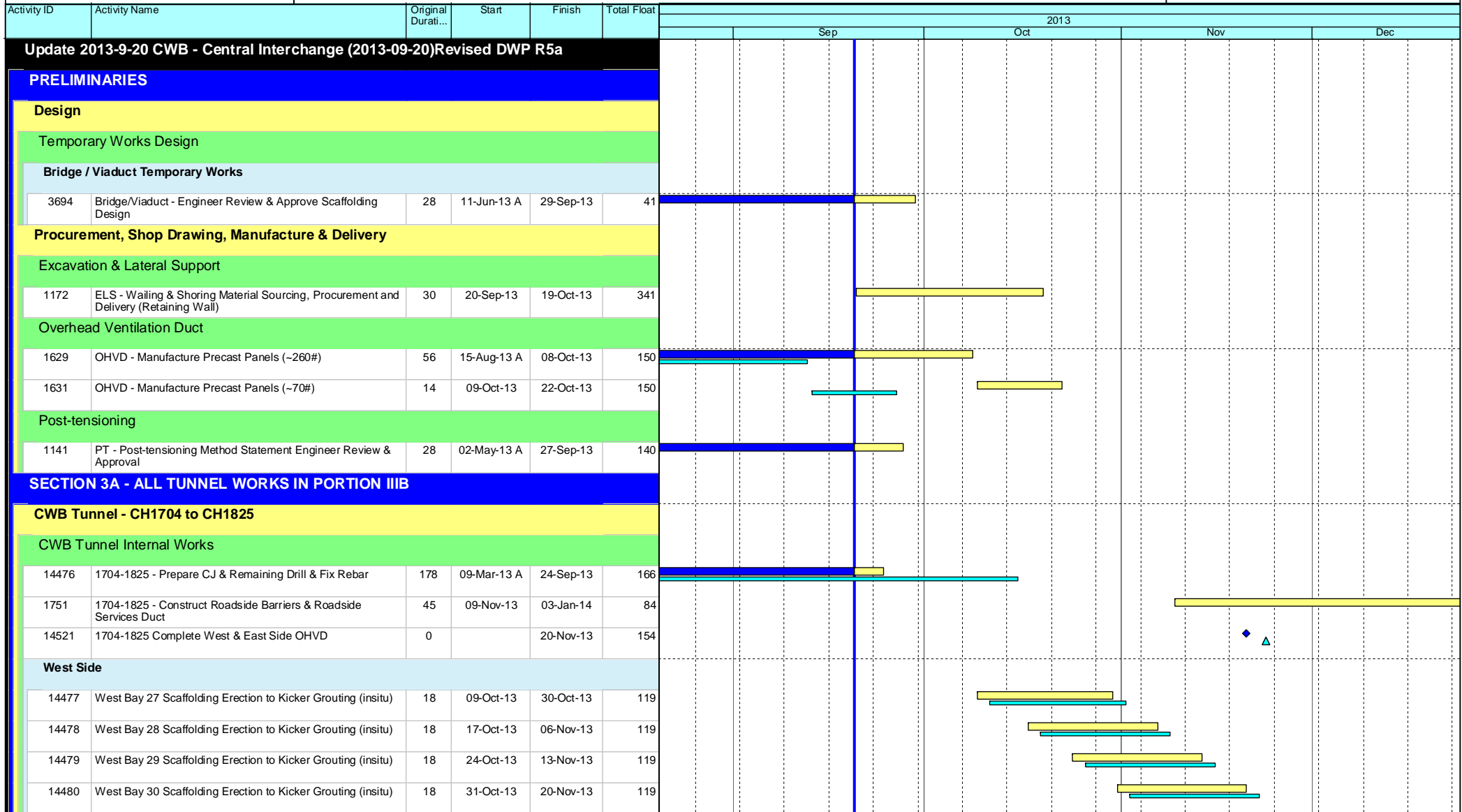
Date	Revision	Checked	Approved
07-Apr-11		KT	KY

Page 10 of 11

Data Date: 20-Sep-13

HY/2009/18 Central - Wan Chai Bypass (Central Interchange)

TASK filters: 3 Months_1, Not HL.



Leighton Contractors (Asia) Limited Programme Update 36 (September 2013) THREE MONTH ROLLING

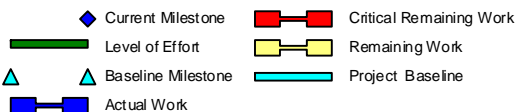
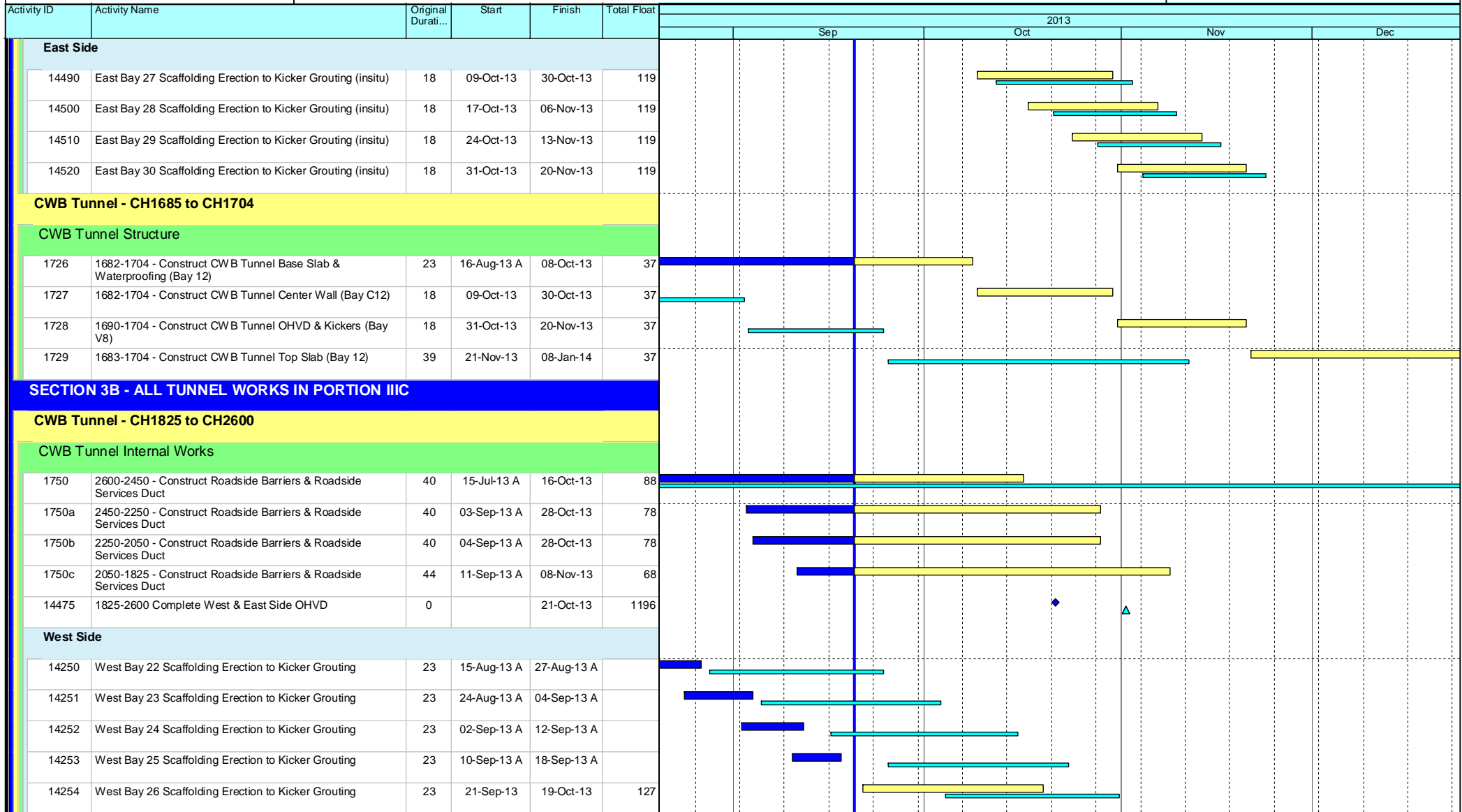
Project ID: U036
Baseline: DCP4-4
Layout: Update Three Month Rolling U036
Page 1 of 9

Date	Revision	Checked	Approv...
21-Aug-13	U035	AT	RW
20-Sep-13	U036	AT	RW

HY/2009/18 Central - Wan Chai Bypass (Central Interchange)



TASK filters: 3 Months_1, Not HL.



Leighton Contractors (Asia) Limited Programme Update 36 (September 2013) THREE MONTH ROLLING

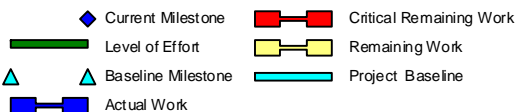
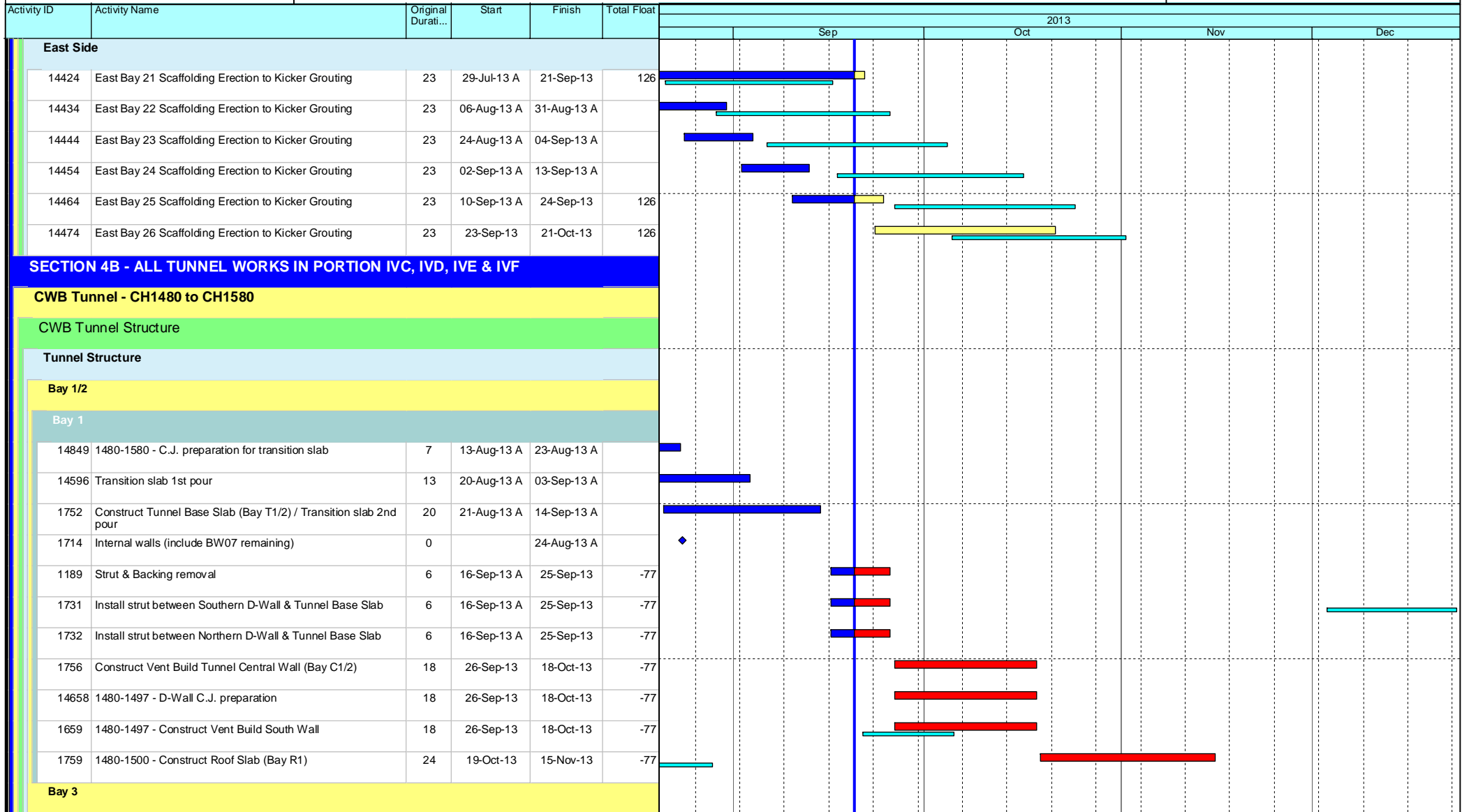
Project ID: U036
Baseline: DCP4-4
Layout: Update Three Month Rolling U036
Page 2 of 9

Date	Revision	Checked	Approv...
21-Aug-13	U035	AT	RW
20-Sep-13	U036	AT	RW

HY/2009/18 Central - Wan Chai Bypass (Central Interchange)



TASK filters: 3 Months_1, Not HL.



Leighton Contractors (Asia) Limited Programme Update 36 (September 2013) THREE MONTH ROLLING

Project ID: U036
Baseline: DCP4-4
Layout: Update Three Month Rolling U036
Page 3 of 9

Date	Revision	Checked	Approv...
21-Aug-13	U035	AT	RW
20-Sep-13	U036	AT	RW

HY/2009/18 Central - Wan Chai Bypass (Central Interchange)



TASK filters: 3 Months_1, Not HL.

Activity ID	Activity Name	Original Durat...	Start	Finish	Total Float	2013			
						Sep	Oct	Nov	Dec
14597	1500-1524 - Construct Vent Build Tunnel OHVD Slab (Bay V1 North)	24	23-Jul-13 A	25-Sep-13	-77	[Gantt bar: Sep 23-Jul-13 A to Sep 25-Sep-13]			
14660	1500-1524 - Construct Vent Build Tunnel OHVD Slab (Bay V1 South)	24	28-Aug-13 A	25-Sep-13	-59	[Gantt bar: Sep 28-Aug-13 A to Sep 25-Sep-13]			
1590	1500-1516 - Construct South Wall	12	26-Sep-13	10-Oct-13	-71	[Gantt bar: Sep 26-Sep-13 to Oct 10-Oct-13]			
1713	11507 - Construct Wall next to South Wall (CH 1500-1516)	18	26-Sep-13	18-Oct-13	-77	[Gantt bar: Sep 26-Sep-13 to Oct 18-Oct-13]			
14522	1500-1524 - Construct Vent Build Tunnel Roof Slab (Bay R2) (Upstand wall only)	24	19-Oct-13	15-Nov-13	-77	[Gantt bar: Oct 19-Oct-13 to Nov 15-Nov-13]			
Bay 5									
14668	1542-1553 - Construct Vent Build Tunnel OHVD & Kickers (Bay V2 Gap South)	18	28-Aug-13 A	18-Sep-13 A		[Gantt bar: Sep 28-Aug-13 A to Sep 18-Sep-13 A]			
14666	1542-1553 - Construct Vent Build Tunnel OHVD & Kickers (Bay V2 Gap North)	18	28-Aug-13 A	18-Sep-13 A		[Gantt bar: Sep 28-Aug-13 A to Sep 18-Sep-13 A]			
1764	1542-1555 - Construct Vent Build Tunnel Roof Slab (Bay R4 Gap)	18	26-Sep-13	18-Oct-13	-53	[Gantt bar: Sep 26-Sep-13 to Oct 18-Oct-13]			
CWB Tunnel Internal Works									
1768	1480-1580 - Removal Scaffolding & Struts	45	30-Sep-13	22-Nov-13	-29	[Gantt bar: Sep 30-Sep-13 to Nov 22-Nov-13]			
1620	1480-1580 - Construct Roadside Barriers and Service Ducts	60	16-Nov-13	28-Jan-14	-77	[Gantt bar: Nov 16-Nov-13 to Jan 28-Jan-14]			
Pump Room & Electrical Room									
14550	Curing & remove scaffolding	18	19-Aug-13 A	06-Sep-13 A		[Gantt bar: Sep 19-Aug-13 A to Sep 06-Sep-13 A]			
14552	Install structural I beam	6	07-Sep-13 A	13-Sep-13 A		[Gantt bar: Sep 07-Sep-13 A to Sep 13-Sep-13 A]			
14554	Construct wall (BW02 upper portion)	12	21-Sep-13	05-Oct-13	-18	[Gantt bar: Sep 21-Sep-13 to Oct 05-Oct-13]			
14556	Construct Top slab (Ceiling of Electrical Room)	12	07-Oct-13	21-Oct-13	-18	[Gantt bar: Oct 07-Oct-13 to Oct 21-Oct-13]			
14558	Curing & remove scaffolding	12	22-Oct-13	04-Nov-13	-18	[Gantt bar: Oct 22-Oct-13 to Nov 04-Nov-13]			
SECTION 4A - ALL TUNNEL WORKS IN PORTION IVA, IVB, IVG & IVH									
CWB Tunnel - CH1580 to CH1646									
CWB Tunnel Structure									
Bay 8									
14523	1597-1620 - Construct CWB Tunnel OHVD & Kickers (Bay V5 South)	25	21-Jun-13 A	24-Aug-13 A		[Gantt bar: Aug 21-Jun-13 A to Aug 24-Aug-13 A]			
14590	1596-1611 - Construct CWB Tunnel Roof Slab (Bay R7) (South)	24	24-Aug-13 A	23-Sep-13	18	[Gantt bar: Aug 24-Aug-13 A to Sep 23-Sep-13]			
14672	1597-1620 - Construct CWB Tunnel OHVD & Kickers (Bay V5 North)	25	26-Aug-13 A	12-Sep-13 A		[Gantt bar: Sep 26-Aug-13 A to Sep 12-Sep-13 A]			

- ◆ Current Milestone
- Critical Remaining Work
- Level of Effort
- Remaining Work
- ▲ Baseline Milestone
- Project Baseline
- Actual Work

Leighton Contractors (Asia) Limited Programme Update 36 (September 2013) THREE MONTH ROLLING

Project ID: U036
Baseline: DCP4-4
Layout: Update Three Month Rolling U036
Page 4 of 9

Date	Revision	Checked	Approv...
21-Aug-13	U035	AT	RW
20-Sep-13	U036	AT	RW

HY/2009/18 Central - Wan Chai Bypass (Central Interchange)



TASK filters: 3 Months_1, Not HL.

Activity ID	Activity Name	Original Durat...	Start	Finish	Total Float	2013			
						Sep	Oct	Nov	Dec
14654	1596-1611 - Construct CWB Tunnel Roof Slab (Bay R7) (North)	24	24-Sep-13	23-Oct-13	116				
1757	1596-1611 - Demolish D-Wall	7	24-Sep-13	02-Oct-13	29				
Bay 9									
1329	1611-1639 - Construct CWB Tunnel Roof Slab (Bay R9) (South)	12	17-Oct-13	30-Oct-13	0				
14650	1611-1639 - Construct CWB Tunnel Roof Slab (Bay R9) (North)	24	31-Oct-13	27-Nov-13	70				
1755	1611-1639 - Demolish D-wall	6	31-Oct-13	06-Nov-13	0				
Bay 10									
1739	1639-1664 - Construct CWB Tunnel Center Wall (Bay C10)	13	02-Jul-13 A	13-Sep-13 A					
14864	1639-1664 - Construct CWB Tunnel Base Slab & Waterproofing (Bay T10) (Zone 1)	21	01-Aug-13 A	30-Sep-13	0				
1742	1620-1646 - Construct CWB Tunnel OHVD & Kickers (Bay V6)	12	02-Oct-13	16-Oct-13	0				
1745	1639-1653 - Construct CWB Tunnel Top Slab (Bay R10) (South)	12	17-Oct-13	30-Oct-13	0				
14652	1639-1653 - Construct CWB Tunnel Top Slab (Bay R10) (North)	24	31-Oct-13	27-Nov-13	70				
1162	1639-1653 - Demolish D-wall	6	31-Oct-13	06-Nov-13	0				
CWB Tunnel Internal Works									
1769	1580-1646 - Removal of Scaffolding and Struts	45	28-Nov-13	22-Jan-14	86				
1730	1580-1646 - Construct Roadside Barriers and Service Ducts	45	05-Dec-13	29-Jan-14	86				
CWB Tunnel - CH1646 to CH1685 (Man Yiu Steet)									
CWB Tunnel Structure									
1161	1664-1682 - Construct CWB Tunnel Base Slab (Bay T11) Zone 3	26	23-Jul-13 A	21-Aug-13 A					
1748	1646-1685 - Erect S2 layer strut (Zone 1)	17	22-Aug-13 A	16-Sep-13 A					
14800	1646-1685 - Excavate to Formation Layer (Zone 1)	8	17-Sep-13 A	23-Sep-13	0				
14802	1646-1685 - Blinding (Zone 1)	2	24-Sep-13	25-Sep-13	0				
14804	1646-1685 - Waterproofing (Zone 1)	3	26-Sep-13	28-Sep-13	0				
14598	1664-1682 - Construct CWB Tunnel Base Slab (Bay T11) Zone 2	7	30-Sep-13	08-Oct-13	0				
1651	1646-1685 - Remove S2 Strut	4	09-Oct-13	12-Oct-13	0				

- ◆ Current Milestone
- Critical Remaining Work
- ▬ Level of Effort
- ▬ Remaining Work
- ▲ Baseline Milestone
- ▬ Project Baseline
- ▬ Actual Work

Leighton Contractors (Asia) Limited Programme Update 36 (September 2013) THREE MONTH ROLLING

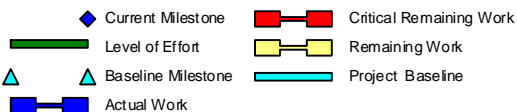
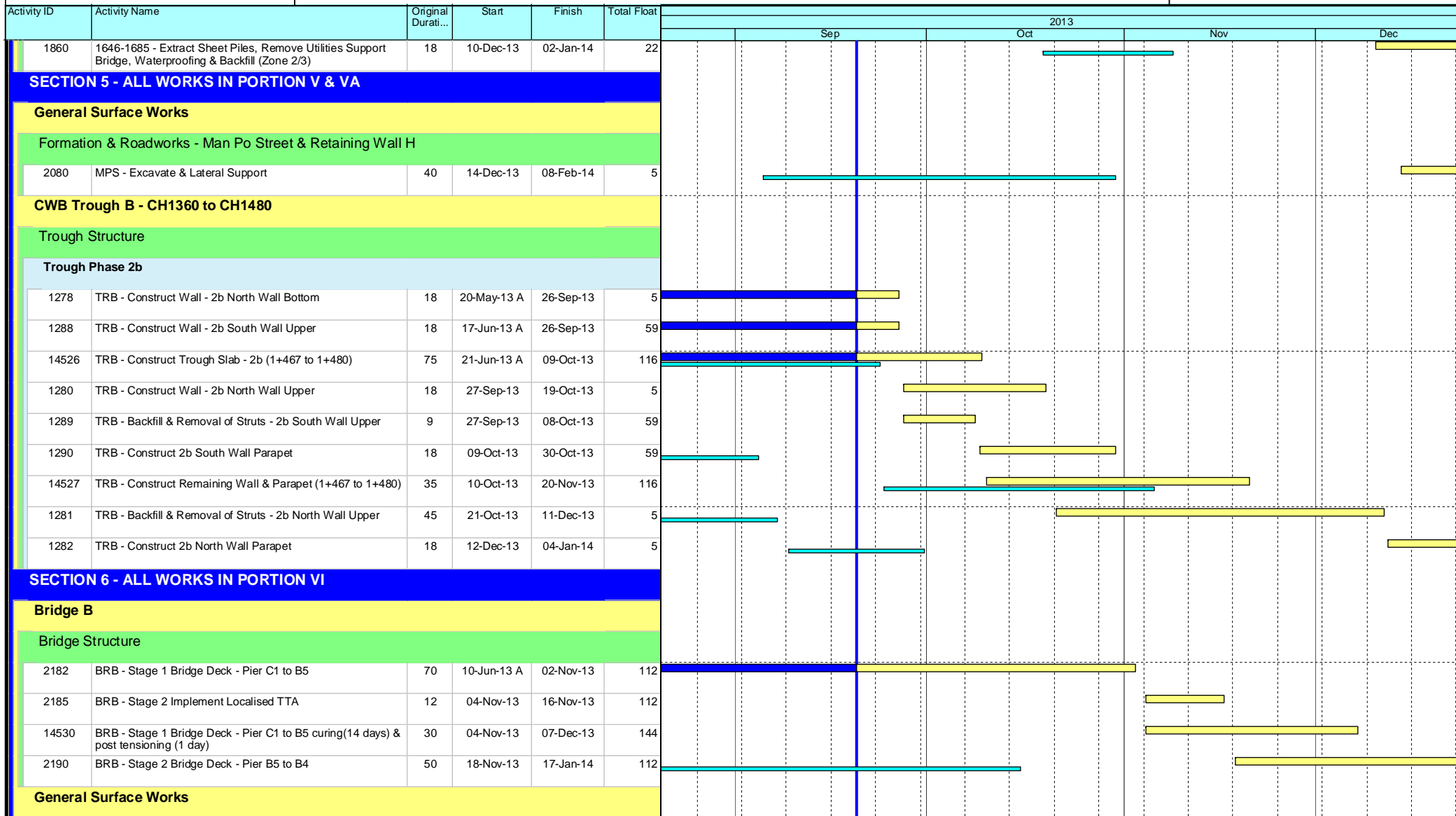
Project ID: U036
Baseline: DCP4-4
Layout: Update Three Month Rolling U036
Page 5 of 9

Date	Revision	Checked	Approv...
21-Aug-13	U035	AT	RW
20-Sep-13	U036	AT	RW

HY/2009/18 Central - Wan Chai Bypass (Central Interchange)



TASK filters: 3 Months_1, Not HL.



Leighton Contractors (Asia) Limited Programme Update 36 (September 2013) THREE MONTH ROLLING

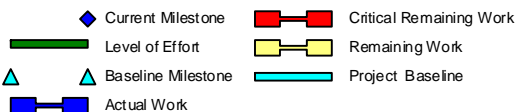
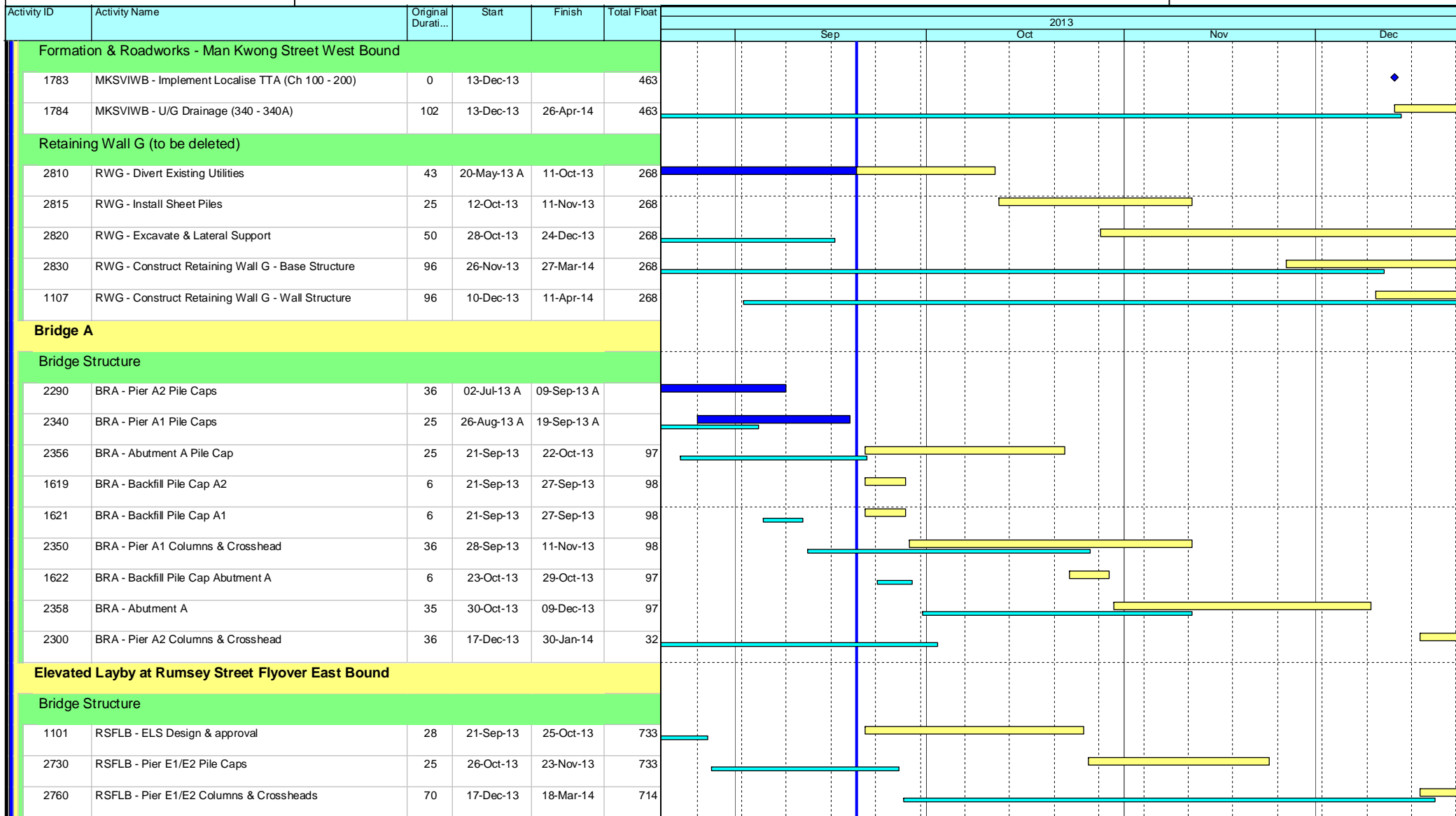
Project ID: U036
Baseline: DCP4-4
Layout: Update Three Month Rolling U036
Page 7 of 9

Date	Revision	Checked	Approv...
21-Aug-13	U035	AT	RW
20-Sep-13	U036	AT	RW

HY/2009/18 Central - Wan Chai Bypass (Central Interchange)



TASK filters: 3 Months_1, Not HL.



Leighton Contractors (Asia) Limited Programme Update 36 (September 2013) THREE MONTH ROLLING

Project ID: U036
Baseline: DCP4-4
Layout: Update Three Month Rolling U036
Page 8 of 9

Date	Revision	Checked	Approv...
21-Aug-13	U035	AT	RW
20-Sep-13	U036	AT	RW

Data Date: 20-Sep-13

HY/2009/18 Central - Wan Chai Bypass (Central Interchange)



TASK filters: 3 Months_1, Not HL.

Activity ID	Activity Name	Original Durati...	Start	Finish	Total Float	2013					
						Sep	Oct	Nov	Dec		
INTERFACING WORKS											
Interfacing with CWB(RW)											
4215	INT - Section 3B - Joint Inspection & Handover to CWB(RW)	14	09-Nov-13	22-Nov-13	98						
Key Dates for Completion of Sections											
Anticipated Completion											
1034	KD5 - Anticipated Completion	0		08-Nov-13*	84						
1024	KD8 - Anticipated Completion	0		15-Nov-13*	-33						
Contract Required Completion											
1025	KD8 - Section 4B Complete (DAY-1119)	0		13-Oct-13*	0						
Portion Handover Dates											
Anticipated Handover											
2910	Portion IIC Handover (KD5 + 28 days)	0		06-Dec-13*	84						
Contract Required Handover											
3005	Portion IVC Handover (KD8 + 28 days)	0		10-Nov-13*	0						
3015	Portion IVF Handover (KD8 + 28 days)	0		10-Nov-13*	0						

- Current Milestone
- Critical Remaining Work
- Level of Effort
- Remaining Work
- Baseline Milestone
- Project Baseline
- Actual Work

Leighton Contractors (Asia) Limited Programme Update 36 (September 2013) THREE MONTH ROLLING

Project ID: U036
 Baseline: DCP4-4
 Layout: Update Three Month Rolling U036
 Page 9 of 9

Date	Revision	Checked	Approv...
21-Aug-13	U035	AT	RW
20-Sep-13	U036	AT	RW

Activity ID	Activity Name	Rem Dur	Start	Finish	2013																	
					September					October				November				December				
					26	02	09	16	23	30	07	14	21	28	04	11	18	25	02	09	16	
3MRP - Sep 2013 to Dec 2013																						
02 - PRE-CONSTRUCTION WORKS																						
02.2 - Contractor's Submission																						
0220-1510	Road Work Materials/Street Furnitures - Submission	90	15-Nov-13*	12-Feb-14																		
0220-1520	Road Work Materials/Street Furniture - ER Review/Comment	90	03-Dec-13	02-Mar-14																		
02.3 - Method Statement / Shop Drawings																						
0230-1730	MS Temporary Bridge TA1 - ER No Adverse Comment	0	26-Jul-13 A	28-Aug-13 A																		
0230-1580	MS Interim Noise Semi Enclosure - Bridge F1A/F2A Submission	36	01-Dec-13	05-Jan-14																		
0230-1920	MS Marine Temp Pile Removal - Resubmission	6	20-Sep-13	25-Sep-13																		
0230-1930	MS Marine Temp Pile Removal - No Adverse Comment	6	26-Sep-13	01-Oct-13																		
0230-1940	MS Beam Erection D1 to E2 - Submission	28	15-Nov-13*	12-Dec-13																		
0230-1950	MS Beam Erection D1 to E2 - Comment/Resubmission	28	13-Dec-13	09-Jan-14																		
0230-1372	MS Segment Erection by Crane - Submission	18	20-Sep-13	07-Oct-13																		
0230-1374	MS Segment Erection by Crane - Comment/Resubmission	15	08-Oct-13	22-Oct-13																		
0230-1376	MS Segment Erection by Crane - No Adverse Comment	12	23-Oct-13	03-Nov-13																		
0230-2000	MS EVB ELS - Submission	8	19-Aug-13 A	27-Sep-13																		
0230-2010	MS EVB ELS - Comment/Resubmission	15	28-Sep-13	12-Oct-13																		
0230-2020	MS EVB ELS - No Adverse Comment	18	13-Oct-13	30-Oct-13																		
0230-1420	MS Permanent Noise Barrier - Submission	28	13-Dec-13	09-Jan-14																		
02.4 - Contractor's Design and Build Items																						
0240-1041	Temp Bridge "TD" Design - Submission	48	01-Mar-13 A	06-Nov-13																		
0240-1042	Temp Bridge "TD" Design - ER review and comment	28	07-Nov-13	04-Dec-13																		
0240-1043	Temp Bridge "TD" Design - Resubmission	36	05-Dec-13	09-Jan-14																		
0240-1105	Int. Noise Enclosure Structural Design - Submission	16	20-Mar-13 A	05-Oct-13																		
0240-1110	Int. Noise Enclosure Structural Design - ER Review/Resubmission	28	06-Oct-13	02-Nov-13																		
0240-1112	Int. Noise Enclosure Structural Design - No Adverse Comment	28	03-Nov-13	30-Nov-13																		
0240-1113	Int. Noise Enclosure Structural - Shop Drawings Bridge F1A/F2A	60	01-Dec-13	29-Jan-14																		
0240-1127	Noise Barrier Structural Design - ER Review/Resubmission	11	30-May-13 A	30-Sep-13																		
0240-1128	Noise Barrier Structural Design - No Adverse Comment	28	01-Oct-13	28-Oct-13																		
0240-1131	Noise Barrier - Procurement/Sub-contractor	60	02-Oct-13	30-Nov-13																		
0240-1132	Noise Barrier Structural - Shop Drawings	90	01-Dec-13	28-Feb-14																		
0240-1134	Noise Barrier Panel - Submission	36	01-Dec-13	05-Jan-14																		
0240-1160	Perm. Noise Enclosure Structural Design - ER Review/Resubmission	0	20-Aug-13 A	19-Sep-13 A																		
0240-1162	Perm. Noise Enclosure Structural Design - No Adverse Comment	28	20-Sep-13	17-Oct-13																		
0240-1163	Perm. and Int. Noise Enclosure - Procurement/Sub-contractor	60	02-Oct-13	30-Nov-13																		
0240-1164	Perm. Noise Enclosure Structural - Shop Drawings Bridge F1A/F2A	60	01-Dec-13	29-Jan-14																		
02.5 - Bridge Segment/Beam Off-site Precasting																						
0250-1700.10	Bridge Precast Beam Casting Bridge F4 Beam 6-1	0	31-Jul-13 A	04-Sep-13 A																		
0250-1700.11	Bridge Precast Beam Casting Bridge E Beam E1D1-A	0	20-Jun-13 A	07-Sep-13 A																		
0250-1700.21	Bridge Precast Beam Casting Bridge E Beam E1D-B	12	07-Sep-13 A	01-Oct-13																		
0250-1700.31	Bridge Precast Beam Casting Bridge E Beam E1D-C	18	20-Sep-13	07-Oct-13																		
0250-1700.41	Bridge Precast Beam Casting Bridge E Beam E2E1-A	18	27-Sep-13	14-Oct-13																		
0250-1700.51	Bridge Precast Beam Casting Bridge E Beam E2E1-B	18	04-Oct-13	21-Oct-13																		
0250-1700.61	Bridge Precast Beam Casting Bridge E Beam E2E1-C	18	11-Oct-13	28-Oct-13																		

- Remaining Level of Effort
- Actual Level of Effort
- Actual Work
- Remaining Work
- Critical Remaining Work
- ◆ Milestone

Contract HY/2009/19

Three Month Rolling Programme (20 Sep 2013 to 19 Dec 2013)

3MRP

3MRP - Sep 2013 to Dec 2013

Page 1 of 9

Activity ID	Activity Name	Rem Dur	Start	Finish	2013																
					September					October				November			December				
					26	02	09	16	23	30	07	14	21	28	04	11	18	25	02	09	16
0250-1600.13	Bridge D2 Pier D06 Precasting Segment (1-17) - Mould S1	22	09-Aug-13 A	12-Oct-13	Bridge D2 Pier D06 Precasting Segment (1-17) - Mould S1																
0250-1600.14	Bridge D2 Pier D05 Precasting Segment (1-17) - Mould S1	42	12-Oct-13	23-Nov-13	Bridge D2 Pier D05 Precasting Segment (1-17) - Mould S1																
0250-1600.15	Bridge D1 Pier D02 Precasting Segment (1-17) - Mould S1	42	23-Nov-13	04-Jan-14	Bridge D1 Pier D02 Precasting Segment (1-17) - Mould S1																
0250-1650.04	Bridge F1 Pier F03 Precasting Segment (1-6) - Mould S2	0	07-Jun-13 A	23-Aug-13 A	Bridge F1 Pier F03 Precasting Segment (1-6) - Mould S2																
0250-1650.16	Bridge F2 Pier F05 Precasting Segment (1-6) - Mould S2	11	04-Aug-13 A	30-Sep-13	Bridge F2 Pier F05 Precasting Segment (1-6) - Mould S2																
0250-1650.17	Bridge D2 Pier D08 Precasting Segment (1-8) - Mould S2	24	30-Sep-13	24-Oct-13	Bridge D2 Pier D08 Precasting Segment (1-8) - Mould S2																
0250-1650.18	Bridge D2 Pier D04 Precasting Segment (1-8) - Mould S2	24	24-Oct-13	17-Nov-13	Bridge D2 Pier D04 Precasting Segment (1-8) - Mould S2																
0250-1650.19	Bridge D1 Pier D04 Precasting Segment (1-8) - Mould S2	24	17-Nov-13	11-Dec-13	Bridge D1 Pier D04 Precasting Segment (1-8) - Mould S2																
0250-1650.20	Bridge D1 Pier D03 Precasting Segment (1-17) - Mould S2	42	11-Dec-13	22-Jan-14	Bridge D1 Pier D03 Precasting Segment (1-17) - Mould S2																
0250-1655.024	Bridge F3 - F07 Segment - Remaining (10 nos) - Mould T	30	20-Sep-13	19-Oct-13	Bridge F3 - F07 Segment - Remaining (10 nos) - Mould T																
0250-1655.02	Bridge F3 - F05 Segment - Remaining (4 nos) - Mould T	12	20-Oct-13	31-Oct-13	Bridge F3 - F05 Segment - Remaining (4 nos) - Mould T																
0250-1655.01	Bridge F3 - F05 Segment - Pier Segment +1 (2 nos) - Mould T	8	21-Aug-13 A	08-Nov-13	Bridge F3 - F05 Segment - Pier Segment +1 (2 nos) - Mould T																
0250-1830	Segment Storage - Portal Gantry Foundation + Rail Stage 3	0	20-Aug-13 A	02-Sep-13 A	Segment Storage - Portal Gantry Foundation + Rail Stage 3																
03 - PRELIMINARY WORKS																					
03.3 - Interface Works																					
0330-1110	Submit/Agree FEHD/ER Relocation Sequence & Programme	0	19-Mar-13 A	19-Sep-13 A	Submit/Agree FEHD/ER Relocation Sequence & Programme																
0330-1200	Agreement of HGHK Interim Temp Carpark	34	20-Jun-13 A	01-Nov-13	Agreement of HGHK Interim Temp Carpark																
0330-1300	Erect Interim Temp Carpark for HGHK	18	18-Nov-13	09-Dec-13	Erect Interim Temp Carpark for HGHK																
05 - SECTION 2 & 2A OF THE WORKS																					
05.1 - Cut & Cover Tunnel Ch 4855-4932 (APS Footprint)																					
05.1.1 - D-Wall Construction																					
0511-1090	Install Dewatering Well - EVB Area (18 nos.)	0	27-Jun-13 A	19-Sep-13 A	Install Dewatering Well - EVB Area (18 nos.)																
0511-1092	Install Recharging Well - EVB Area (6 nos.)	0	03-Jul-13 A	19-Sep-13 A	Install Recharging Well - EVB Area (6 nos.)																
0511-1095	Install King Post - EVB Area (20 nos.)	24	23-Aug-13 A	21-Oct-13	Install King Post - EVB Area (20 nos.)																
0511-1091	Install Observation Well - EVB Area (Rem 8 nos.)	9	10-Oct-13	21-Oct-13	Install Observation Well - EVB Area (Rem 8 nos.)																
0511-94	Install Instrumentation - EVB Area (2 nos.)	6	15-Oct-13	21-Oct-13	Install Instrumentation - EVB Area (2 nos.)																
0511-1100	Pump Test Ch 4855-4932	8	22-Oct-13	30-Oct-13	Pump Test Ch 4855-4932																
05.1.2 - ELS																					
0512-1101	Excav Zone 1 EVB Area 1st Layer + Strut	15	31-Oct-13	16-Nov-13	Excav Zone 1 EVB Area 1st Layer + Strut																
0512-1102	Excav Zone 2 EVB Area 2nd Layer + Strut	26	18-Nov-13	17-Dec-13	Excav Zone 2 EVB Area 2nd Layer + Strut																
0512-1103	Excav Zone 3 EVB Area 3rd Layer + Strut	26	18-Dec-13	18-Jan-14	Excav Zone 3 EVB Area 3rd Layer + Strut																
0512-1120	Excav Zone 4 EVB Area 1st Layer + Strut + Dem. Bulk Head Wall	18	22-Nov-13	12-Dec-13	Excav Zone 4 EVB Area 1st Layer + Strut + Dem. Bulk Head Wall																
0512-1130	Excav Zone 5 EVB Area 1st Layer + Strut + Dem. Bulk Head Wall	25	13-Dec-13	13-Jan-14	Excav Zone 5 EVB Area 1st Layer + Strut + Dem. Bulk Head Wall																
05.2 - Cut & Cover Tunnel Ch 4932-5149																					
05.2.1 - D-Wall Construction																					
0521-1880	D-wall N71-N74 Grouting for Existing Seawall Rubble Mound	0	20-Aug-13 A	29-Aug-13 A	D-wall N71-N74 Grouting for Existing Seawall Rubble Mound																
0521-1890	D-wall N71-N74 Guide Wall	0	27-Aug-13 A	05-Sep-13 A	D-wall N71-N74 Guide Wall																
0521-1900.10	D-wall Panel N74	0	07-Sep-13 A	19-Sep-13 A	D-wall Panel N74																
0521-1900.20	D-wall Panel N71	7	13-Sep-13 A	28-Sep-13	D-wall Panel N71																
0521-1900.15	D-wall Panel N72	14	30-Sep-13	17-Oct-13	D-wall Panel N72																
0521-1900.30	D-wall Panel N73	12	18-Oct-13	31-Oct-13	D-wall Panel N73																
0521-2145.10	D-wall Panel S78	0	31-Aug-13 A	06-Sep-13 A	D-wall Panel S78																
0521-2215	D-wall S78-S79 Guide Wall	0	28-Aug-13 A	29-Aug-13 A	D-wall S78-S79 Guide Wall																
0521-2145.15	D-wall Panel S79	11	19-Sep-13 A	04-Oct-13	D-wall Panel S79																

- Remaining Level of Effort
- Actual Level of Effort
- Actual Work
- Remaining Work
- Critical Remaining Work
- ◆ Milestone

Contract HY/2009/19

Three Month Rolling Programme (20 Sep 2013 to 19 Dec 2013)

3MRP

3MRP - Sep 2013 to Dec 2013

Activity ID	Activity Name	Rem Dur	Start	Finish	2013																							
					September						October						November						December					
					26	02	09	16	23	30	07	14	21	28	04	11	18	25	02	09	16							
0524-2552	Tunnel Waterproofing Base Slab Bay 2 and 3	2	17-Sep-13 A	23-Sep-13																								
0524-3055	Bay 3 Tunnel Base Slab	7	24-Sep-13	02-Oct-13																								
0524-3065	Bay 3 Tunnel Vertical Wall	7	03-Oct-13	10-Oct-13																								
0524-3075	Bay 3 Tunnel False Works	6	11-Oct-13	18-Oct-13																								
0524-3085	Bay 3 Tunnel OHVD Slab	8	19-Oct-13	28-Oct-13																								
0524-3095	Bay 3 Tunnel Roof Slab	12	29-Oct-13	11-Nov-13																								
0524-2553	Tunnel Waterproofing Base Slab Bay 4, 5 and 6	6	21-Sep-13	27-Sep-13																								
0524-3155	Bay 6 Tunnel Base Slab	7	28-Sep-13	07-Oct-13																								
0524-3165	Bay 6 Tunnel Vertical Wall	7	08-Oct-13	16-Oct-13																								
0524-3175	Bay 6 Tunnel False Works	6	17-Oct-13	23-Oct-13																								
0524-3185	Bay 6 Tunnel OHVD Slab	8	24-Oct-13	01-Nov-13																								
0524-3195	Bay 6 Tunnel Roof Slab	12	02-Nov-13	15-Nov-13																								
0524-3305	Tunnel Waterproofing Base Slab Bay 9	6	05-Nov-13	11-Nov-13																								
0524-3315	Bay 9 Tunnel Base Slab	7	12-Nov-13	19-Nov-13																								
0524-3325	Bay 9 Tunnel Vertical Wall	7	20-Nov-13	27-Nov-13																								
0524-3335	Bay 9 Tunnel False Works	6	28-Nov-13	04-Dec-13																								
0524-3345	Bay 9 Tunnel OHVD Slab	8	05-Dec-13	13-Dec-13																								
0524-3355	Bay 9 Tunnel Roof Slab	12	14-Dec-13	28-Dec-13																								
0524-3105	Bay 2 Tunnel Base Slab	7	07-Oct-13	15-Oct-13																								
0524-3115	Bay 2 Tunnel Vertical Wall	7	13-Nov-13	20-Nov-13																								
0524-3125	Bay 2 Tunnel False Works	6	21-Nov-13	27-Nov-13																								
0524-3135	Bay 2 Tunnel OHVD Slab	8	28-Nov-13	06-Dec-13																								
0524-3145	Bay 2 Tunnel Roof Slab	12	07-Dec-13	20-Dec-13																								
0524-3205	Bay 4 Tunnel Base Slab	7	16-Oct-13	23-Oct-13																								
0524-3215	Bay 4 Tunnel Vertical Wall	7	24-Oct-13	31-Oct-13																								
0524-3225	Bay 4 Tunnel False Works	6	01-Nov-13	07-Nov-13																								
0524-3235	Bay 4 Tunnel OHVD Slab	8	08-Nov-13	16-Nov-13																								
0524-3245	Bay 4 Tunnel Roof Slab	12	18-Nov-13	30-Nov-13																								
0524-3255	Bay 5 Tunnel Base Slab	7	24-Oct-13	31-Oct-13																								
0524-3265	Bay 5 Tunnel Vertical Wall	7	01-Nov-13	08-Nov-13																								
0524-3275	Bay 5 Tunnel False Works	6	09-Nov-13	15-Nov-13																								
0524-3285	Bay 5 Tunnel OHVD Slab	8	16-Nov-13	25-Nov-13																								
0524-3295	Bay 5 Tunnel Roof Slab	12	26-Nov-13	09-Dec-13																								
0524-3375	Bay 7 Tunnel Base Slab	7	12-Nov-13	19-Nov-13																								
0524-3385	Bay 7 Tunnel Vertical Wall	7	20-Nov-13	27-Nov-13																								
0524-3395	Bay 7 Tunnel False Works	6	28-Nov-13	04-Dec-13																								
0524-3405	Bay 7 Tunnel OHVD Slab	8	05-Dec-13	13-Dec-13																								
0524-3415	Bay 7 Tunnel Roof Slab	12	14-Dec-13	28-Dec-13																								
0524-3425	Bay 8 Tunnel Base Slab	7	20-Nov-13	27-Nov-13																								
0524-3435	Bay 8 Tunnel Vertical Wall	7	28-Nov-13	05-Dec-13																								
0524-3445	Bay 8 Tunnel False Works	6	06-Dec-13	12-Dec-13																								
0524-3455	Bay 8 Tunnel OHVD Slab	8	13-Dec-13	21-Dec-13																								
0524-3485	Bay 10 Tunnel Base Slab	7	03-Dec-13	10-Dec-13																								
0524-3495	Bay 10 Tunnel Vertical Wall	7	11-Dec-13	18-Dec-13																								

- █ Remaining Level of Effort
- █ Actual Level of Effort
- █ Actual Work
- █ Remaining Work
- █ Critical Remaining Work
- ◆ Milestone

Contract HY/2009/19

Three Month Rolling Programme (20 Sep 2013 to 19 Dec 2013)

3MRP

3MRP - Sep 2013 to Dec 2013

Activity ID	Activity Name	Rem Dur	Start	Finish	2013													
					September					October				November			December	
					26	02	09	16	23	30	07	14	21	28	04	11	18	25
0524-3505	Bay 10 Tunnel False Works	6	19-Dec-13	26-Dec-13														
0524-3535	Bay 11 Tunnel Base Slab	7	11-Dec-13	18-Dec-13														
0524-3545	Bay 11 Tunnel Vertical Wall	7	19-Dec-13	27-Dec-13														
0524-3585	Bay 12 Tunnel Base Slab	7	03-Dec-13	10-Dec-13														
0524-3595	Bay 12 Tunnel Vertical Wall	7	11-Dec-13	18-Dec-13														
0524-3605	Bay 12 Tunnel False Works	6	19-Dec-13	26-Dec-13														
0524-3635	Bay 13 Tunnel Base Slab	7	11-Dec-13	18-Dec-13														
0524-3645	Bay 13 Tunnel Vertical Wall	7	19-Dec-13	27-Dec-13														
05.3 - Box Culvert T1																		
0530-3086	Bay 1 - Instal Temporary Diversion Steel Pipe	12	02-Oct-13*	16-Oct-13														
0530-3408	Bay 1 - Demolish Existing Culvert	12	17-Oct-13	30-Oct-13														
0530-3079	Bay 1 - Base Slab	18	31-Oct-13	20-Nov-13														
0530-3081	Bay 1 - Wall & Roof	18	21-Nov-13	11-Dec-13														
06 - SECTION 3 OF THE WORKS																		
06.1 - Westbound - Pier 29-34																		
0610-2110	Pier 29 Pre-drilling at Portion VB (4 nos)	0	20-Aug-13 A	06-Sep-13 A														
0610-2115	Pier 29 Approve Founding Level	1	07-Sep-13 A	21-Sep-13														
0610-2120	Pier 29 Bored Piles (4 nos)	48	23-Sep-13	19-Nov-13														
06.2 - Box Culvert U1																		
0620-2570	1500mm Drainage MH 1-43 to 1-59A - Sheet Piling	0	17-Aug-13 A	26-Aug-13 A														
0620-2580	1500mm Drainage MH 1-43 to 1-59A - Excavation	0	27-Aug-13 A	19-Sep-13 A														
0620-2590	1500mm Drainage MH 1-43 to 1-59A - Pipe Laying	6	21-Sep-13	27-Sep-13														
0620-2600	1500mm Drainage Construct MH 1-43	12	28-Sep-13	12-Oct-13														
0620-2610	1500mm Drainage MH 1-43 to 1-59A - Backfill + Extract Sheet Pile	12	15-Oct-13	28-Oct-13														
0620-2620	1500mm Drainage MH 1-42 to 1-43 - Sheet Piling	0	17-Aug-13 A	26-Aug-13 A														
0620-2630	1500mm Drainage MH 1-42 to 1-43 - Excavation	7	28-Sep-13	07-Oct-13														
0620-2640	1500mm Drainage MH 1-42 to 1-43 - Pipe Laying	5	08-Oct-13	12-Oct-13														
0620-2650	1500mm Drainage Construct MH 1-42	12	15-Oct-13	28-Oct-13														
0620-2660	1500mm Drainage MH 1-42 to 1-43 - Backfill + Extract Sheet Pile	9	29-Oct-13	07-Nov-13														
06.3 - Admin Building																		
0630-3100	Predrill for Adm Building (27 no) (3 set)	45	08-Nov-13	31-Dec-13														
10 - SECTION X OF THE WORKS																		
10.1 - E/B Bridges (Bridge D, E and F)																		
10.1.1 - Marine Pier Construction																		
Pier F03 to F15																		
1011-2175	Bearing intallation Pier F3	0	20-Aug-13 A	07-Sep-13 A														
1011-2200	F4 Crosshead Construction	0	18-Jun-13 A	05-Sep-13 A														
1011-2205	Bearing intallation Pier F4	12	10-Oct-13	24-Oct-13														
1011-2235	Bearing intallation Pier F5	12	18-Oct-13	31-Oct-13														
1011-2260	F6 Crosshead Construction	0	22-Aug-13 A	19-Sep-13 A														
1011-2261	Bearing intallation Pier F6	12	25-Oct-13	07-Nov-13														
1011-2275	F7 Pile Cap Construction	0	20-Jun-13 A	03-Sep-13 A														
1011-2280	F7 Pier/Column Construction	1	04-Sep-13 A	21-Sep-13														
1011-2290	F7 Crosshead Construction	24	23-Sep-13	22-Oct-13														

- Remaining Level of Effort
- Actual Level of Effort
- Actual Work
- Remaining Work
- Critical Remaining Work
- ◆ Milestone

Contract HY/2009/19

Three Month Rolling Programme (20 Sep 2013 to 19 Dec 2013)

3MRP

3MRP - Sep 2013 to Dec 2013

Page 5 of 9

Activity ID	Activity Name	Rem Dur	Start	Finish	2013																	
					September					October				November				December				
					26	02	09	16	23	30	07	14	21	28	04	11	18	25	02	09	16	
1011-2291	Bearing intallation Pier F7	12	01-Nov-13	14-Nov-13																		
1011-2305	F8 Pile Cap Construction	7	05-Aug-13 A	28-Sep-13																		
1011-2310	F8 Pier/Column Construction	15	30-Sep-13	18-Oct-13																		
1011-2320	F8 Crosshead Construction	24	19-Oct-13	15-Nov-13																		
1011-2345	Bearing intallation Pier F8	12	23-Nov-13	06-Dec-13																		
1011-2380	F9 Pile Cap Shutter Cofferdam	6	29-Jul-13 A	27-Sep-13																		
1011-3115	F9 Pile Cap Construction	21	28-Sep-13	24-Oct-13																		
1011-2390	F9 Pier/Column Construction	15	25-Oct-13	11-Nov-13																		
1011-2400	F9 Crosshead Construction	24	12-Nov-13	09-Dec-13																		
1011-2410	F10 Pile Cap Shutter Cofferdam	18	21-Sep-13	12-Oct-13																		
1011-3125	F10 Pile Cap Construction	21	15-Oct-13	07-Nov-13																		
1011-2420	F10 Pier/Column Construction	15	08-Nov-13	25-Nov-13																		
1011-2430	F10 Crosshead Construction	24	26-Nov-13	23-Dec-13																		
1011-2350	F11 Pile Cap Shutter Cofferdam	18	07-Oct-13	28-Oct-13																		
1011-3135	F11 Pile Cap Construction	21	29-Oct-13	21-Nov-13																		
1011-2360	F11 Pier/Column Construction	15	22-Nov-13	09-Dec-13																		
1011-2370	F11 Crosshead Construction	24	10-Dec-13	08-Jan-14																		
1011-2075	F12 Dismantle Piling Platform	2	05-Aug-13 A	23-Sep-13																		
1011-2440	F12 Pile Cap Shutter Cofferdam	18	22-Oct-13*	11-Nov-13																		
1011-3145	F12 Pile Cap Construction	21	12-Nov-13*	05-Dec-13																		
1011-2450	F12 Pier/Column Construction	15	06-Dec-13	23-Dec-13																		
1011-2080	F13 Dismantle Piling Platform	7	12-Aug-13 A	28-Sep-13																		
1011-2470	F13 Pile Cap Shutter Cofferdam	18	05-Nov-13	25-Nov-13																		
1011-3155	F13 Pile Cap Construction	21	26-Nov-13	19-Dec-13																		
1011-2480	F13 Pier/Column Construction	15	20-Dec-13	08-Jan-14																		
1011-2085	F14 Dismantle Piling Platform	9	17-Aug-13 A	02-Oct-13																		
1011-2500	F14 Pile Cap Shutter Cofferdam	18	19-Nov-13*	09-Dec-13																		
1011-3165	F14 Pile Cap Construction	21	10-Dec-13*	04-Jan-14																		
1011-2975	F3 Extract Temp Pile	15	21-Sep-13	09-Oct-13																		
1011-2985	F4 Extract Temp Pile	15	10-Oct-13	28-Oct-13																		
1011-3105	F5 Extract Temp Pile	12	29-Oct-13	11-Nov-13																		
1011-2265	F6 Extract Temp Pile	12	12-Nov-13	25-Nov-13																		
1011-2025	F7 Extract Temp Pile	12	26-Nov-13	09-Dec-13																		
1011-3075	Existing IEC Bridge F8-F14 - Remove Existing Road Lighting	6	15-Oct-13*	20-Oct-13																		
1011-3095	Existing IEC Bridge F8-F14 - Demolish Existing Parapet	60	21-Oct-13	19-Dec-13																		
Pier F01 to F02																						
1011-2890	F1B Pile Cap Shutter Cofferdam	18	11-Nov-13*	30-Nov-13																		
1011-2895	F1B Pile Cap Construction	18	02-Dec-13	21-Dec-13																		
1011-2965	Extract Temp Pile F1	8	06-Sep-13 A	30-Sep-13																		
1011-2963	Extract Temp Pile F2	15	30-Sep-13	19-Oct-13																		
10.1.2 - Land Pier Construction																						
Pier D05 to D07																						
1012-1300	Pier D05 Bored Piles Testing	0	20-Aug-13 A	02-Sep-13 A																		
1012-1495	Pier D05 Drive Sheetpiles	0	07-Sep-13 A	12-Sep-13 A																		

- █ Remaining Level of Effort
- █ Actual Level of Effort
- █ Actual Work
- █ Remaining Work
- █ Critical Remaining Work
- ◆ Milestone

Contract HY/2009/19

Three Month Rolling Programme (20 Sep 2013 to 19 Dec 2013)

3MRP

3MRP - Sep 2013 to Dec 2013

Activity ID	Activity Name	Rem Dur	Start	Finish	2013													
					September					October				November			December	
					26	02	09	16	23	30	07	14	21	28	04	11	18	25
1013-1240	Bridge F1A Construct Parapet (111/6m - 4sets @ 2d)	28	15-Jan-14*	19-Feb-14														
Bridge F2A																		
1013-1270	Bridge F2A Segment Launching from Pier F4 (13 nos)	8	16-Nov-13	25-Nov-13														
1013-1260	Bridge F2A Segment Launching from Pier F3 (5 nos)	5	26-Nov-13	30-Nov-13														
1013-1280	Bridge F2A Segment Launching from Pier F5 (6 nos)	7	02-Dec-13	09-Dec-13														
1013-1330	Bridge F2A Stitching at midspan between F3 and F4	3	02-Dec-13	04-Dec-13														
1013-1340	Bridge F2A Stitching at midspan between F4 and F5	3	10-Dec-13	12-Dec-13														
Bridge F3A																		
1013-1290	Bridge F3A Segment Launching from Pier F5 (6 nos)	7	10-Dec-13	17-Dec-13														
Bridge D2																		
1013-1480	Bridge D2 Segment Launching by Crane Pier D07 T-span (17 nos)	21	04-Nov-13	27-Nov-13														
1013-1490	Bridge D2 Segment Launching by Crane Pier D06 T-span (17 nos)	18	28-Nov-13	18-Dec-13														
1013-1520	Bridge D2 Stitching at midspan between D07-D08	3	28-Nov-13	30-Nov-13														
1013-1470	Bridge D2 Segment Launching by Crane Pier D08 End-span (8 nos)	9	19-Dec-13	30-Dec-13														
1013-1530	Bridge D2 Stitching at midspan between D06-D07	3	19-Dec-13	21-Dec-13														
10.1.4 - Bridge E / Hing Fat Slip Road																		
Pier Construction																		
1014-1086	Pier E2 Column	0	23-Jul-13 A	02-Sep-13 A														
1014-1087	Pier E2 Crosshead + Bearing	9	03-Sep-13 A	02-Oct-13														
1014-1230	Pier E1b-2 Bored Pile	0	24-Jun-13 A	10-Sep-13 A														
1014-1240	Pier E1b-1 Bored Pile	24	05-Oct-13	02-Nov-13														
1014-1020	Pier E1b Bored Pile Testing	12	04-Nov-13	16-Nov-13														
1014-1030	Pier E1b Construct Cap & Pier	18	18-Nov-13	07-Dec-13														
1014-1040	Pier E1b Construct Pier/Column	12	09-Dec-13	21-Dec-13														
1014-1050	Pier E1b Construct Crosshead	18	23-Dec-13	14-Jan-14														
10.3 - Middle Bridge (Bridge F)																		
10.3.1 - Pier Construction																		
Abutment D12																		
1031-1400	Bored pile D12-07 (low headroom)	0	30-May-13 A	17-Sep-13 A														
10.5 - Temporary Bridge																		
10.5.1 - Temporary Bridge 'TA'																		
1051-1014	Temporary Bridge TA1 - HFSR Temp. Parapet + Remove HyD Lighting	0	05-Aug-13 A	31-Aug-13 A														
1051-1015	Temporary Bridge TA1 - Demolish Existing Parapet at HFSR/TA1 Tie-in	0	02-Sep-13 A	14-Sep-13 A														
1051-1016	Temporary Bridge TA1 - Bridge Steel Frame Structure	15	02-Sep-13 A	09-Oct-13														
1051-1017	Temporary Bridge TA1 - Bridge Decking + Tie-in to Existing HFSR	23	23-Sep-13	21-Oct-13														
1051-1018	Temporary Bridge TA1 - Parapet	14	12-Oct-13	29-Oct-13														
10.6 - Tunnel Approach Ramp																		
10.6.1 - Approach Ramp (Excluding Portion IIB)																		
Bored Piles																		
1061-1580	Bored Pile Ramp - BN01	18	01-Nov-13	21-Nov-13														
1061-1590	Bored Pile Ramp - BN013	18	22-Nov-13	12-Dec-13														
1061-1600	Bored Pile Ramp - BN07	18	13-Dec-13	04-Jan-14														
1061-1650	Bored Pile Ramp - BM44	0	24-Aug-13 A	03-Sep-13 A														
1061-1660	Bored Pile Ramp - BM41	7	28-Aug-13 A	28-Sep-13														

- █ Remaining Level of Effort
- █ Actual Level of Effort
- █ Actual Work
- █ Remaining Work
- █ Critical Remaining Work
- ◆ Milestone







Contract HY/2009/19

Three Month Rolling Programme (20 Sep 2013 to 19 Dec 2013)

3MRP

3MRP - Sep 2013 to Dec 2013

Activity ID	Activity Name	Rem Dur	Start	Finish	2013															
					September				October				November				December			
					26	02	09	16	23	30	07	14	21	28	04	11	18	25	02	09
1061-1670	Remaining Pre-drilling for Approach Ramp Bored Piles	56	19-Jul-13 A	27-Nov-13	Remaining Pre-drilling for Approach Ramp Bored Piles															
1061-1661	Bored Pile Ramp - BM39	18	30-Sep-13	22-Oct-13	Bored Pile Ramp - BM39															
1061-1662	Bored Pile Ramp - BM43	18	23-Oct-13	12-Nov-13	Bored Pile Ramp - BM43															
1061-1680	Bored Pile Ramp - BM42	18	13-Nov-13	03-Dec-13	Bored Pile Ramp - BM42															
1061-1690	Bored Pile Ramp - BM40	18	04-Dec-13	24-Dec-13	Bored Pile Ramp - BM40															

-  Remaining Level of Effort
-  Actual Level of Effort
-  Actual Work
-  Remaining Work
-  Critical Remaining Work
-  Milestone

Contract HY/2009/19

Three Month Rolling Programme (20 Sep 2013 to 19 Dec 2013)

3MRP

3MRP - Sep 2013 to Dec 2013

Page 9 of 9



Activity ID	Activity Name	user_text2	Remaining Duration	Early Start	Early Finish	Activity % Complete	2013			
							Sep	Oct	Nov	Dec
Reviewed Works Programme - Rev.0/1 - Review Date 1 Sep 2013 (submitted 3M Rolling Programme 9-11)										
Dredging and Reclamation										
Marine Work Construction										
General Work for Marine Work										
MAR18400	Marine GI - B20B	3 nos. @1d/each, 1WF	2	23-Sep-13*	24-Sep-13	0%				
MAR18420	Marine GI - E18	3 nos. @1d/each, 1WF	2	25-Sep-13	26-Sep-13	0%				
MAR18440	Marine GI - at Zone D	3 nos. @1d/each, 1WF	2	27-Sep-13	28-Sep-13	0%				
MAR18460	Marine GI - BH5	3 nos. @1d/each, 1WF	2	29-Sep-13	30-Sep-13	0%				
MAR18480	Marine GI - BH6	3 nos. @1d/each, 1WF	2	01-Oct-13	02-Oct-13	0%				
MAR18500	Install inclinometer - IN6	3 nos. @1d/each, 1WF	7	01-Sep-13 A	07-Sep-13	0%				
MAR18520	Install inclinometer - IN9	3 nos. @1d/each, 1WF	7	08-Sep-13	14-Sep-13	0%				
MAR18540	Install inclinometer - IN8	3 nos. @1d/each, 1WF	7	15-Sep-13	21-Sep-13	0%				
MAR18560	Install inclinometer - IN10	3 nos. @1d/each, 1WF	7	22-Sep-13	28-Sep-13	0%				
MAR18580	Install inclinometer - IN2	3 nos. @1d/each, 1WF	7	29-Sep-13	05-Oct-13	0%				
MAR18600	Install inclinometer - IN5	3 nos. @1d/each, 1WF	7	06-Oct-13	12-Oct-13	0%				
Area C - Demolish Expo Drive West Bridge										
MAR13240	Area C - Expo Drive - saw cut and remove (Bay 5)	76m wire cut (6 blocks) @2m/hr	5	02-Sep-13	06-Sep-13	0%				
MAR13260	Area C - Expo Drive - saw cut and remove (Bay 6)	76m wire cut (6 blocks) @2m/hr	5	07-Sep-13	12-Sep-13	0%				
MAR13280	Area C - Expo Drive - saw cut and remove (Bay 7)	76m wire cut (6 blocks) @2m/hr	5	13-Sep-13	18-Sep-13	0%				
MAR13440	Area C - Expo Drive - saw cut and remove (Bay 8)	76m wire cut (6 blocks) @2m/hr	5	19-Sep-13	25-Sep-13	0%				
MAR13480	Area C - Expo Drive - saw cut and remove (Bay 9)	76m wire cut (6 blocks) @2m/hr	5	26-Sep-13	02-Oct-13	0%				
MAR13500	Area C - Expo Drive - saw cut and remove (Bay 10)	76m wire cut (6 blocks) @2m/hr	5	03-Oct-13	08-Oct-13	0%				
MAR13520	Area C - Expo Drive - saw cut and remove ((Bay 11)	76m wire cut (6 blocks) @2m/hr	5	09-Oct-13	15-Oct-13	0%				
Dredging										
Dredging - Zone C										
MAR11340	Zone C - Dredging [R6, R7] (25m control zone / temp seawall)	4,000m3 @660m3/d	7	27-Sep-13	03-Oct-13	0%				
MAR11350	Zone C - Dredging [R3-R5] (25m control zone)	14,000m3@1100m3/d	13	04-Oct-13	16-Oct-13	0%				
MAR11360	Zone C - remove existing rock armour [S7-S8] (temp seawall)	5,400m3, 2m thk, 62m3/hr	10	17-Oct-13	26-Oct-13	0%				
MAR11410	Zone C - Dredging [S3-S6]	9,000m3 @1400m3/d	23	04-Nov-13	26-Nov-13	0%				
MAR11480	Zone C - Dredging [T4-T6] (bridge area)	3,600m3 @1400m3/d	3	17-Oct-13	19-Oct-13	0%				
MAR11500	Zone C - Dredging [U4-U6] (bridge area)	3,600m3 @1400m3/d	6	20-Oct-13	25-Oct-13	0%				
MAR11510	Zone C - remove existing rock armour [T7, U7] (bridge area)	3,500m3, 2m thk, 62m3/hr	9	26-Oct-13	03-Nov-13	0%				
Dredging - Zone B										
MAR10900	Zone B - dredging [Q6-Q8] (25m control zone / seawall)	8,000m3 @660m3/d	2	21-Sep-13*	22-Sep-13	0%				
MAR10910	Zone B - dredging [Q2-Q5] (25m control zone)	14,000m3 @1100m3/d	16	23-Sep-13	08-Oct-13	0%				
MAR10920	Zone B - dredging [P6-P8] (seawall 2N)	8,000m3 @1400m3/d	10	09-Oct-13 A	18-Oct-13	0%				
MAR12100	Zone B - dredging [P2-P5] (other area)	22,600m3 @1400m3/d	8	29-Oct-13 A	05-Nov-13	0%				

Data Date: 01-Sep-13

- ◆ Current Milestone
- Actual Work
- Critical Remaining Work
- Remaining Work
- Remaining Level of Effort

**3 Months Rolling Programme for Area Outside CRIII
(September 2013 to November 2013)**

Date	Revision	Checked	Approved
------	----------	---------	----------

04-Oct-13			
-----------	--	--	--



Activity ID	Activity Name	user_text2	Remaining Duration	Early Start	Early Finish	Activity % Complete	2013			
							Sep	Oct	Nov	Dec
Dredging - Zone A2										
MAR10160	Zone A2 - dredging [L6-L8, M6-M8] (seawall 2L, 4, 13)	16,000m3 @1400m3/d	10	19-Oct-13 A	28-Oct-13	0%				
MAR10200	Zone A2 - dredging [M1-M5] (Other Area)	11,600m3 @1400m3/d	7	06-Nov-13 A	12-Nov-13	22.22%				
MAR12440	Zone A2 - dredging [L0-L5] (Other Area)	11,600m3 @1400m3/d	7	17-Nov-13 A	19-Nov-13	22.22%				
Dredging - Zone A1										
MAR10220	Zone A1 - cut existing bored pile	2 nos. @7d	32	28-Nov-13	07-Jan-14	0%				
MAR12520	Zone A1 - dredging [J1-J3, K0-K4] (Other area)	33,200m3 @1400m3/d	8	04-Jun-13 A	27-Nov-13	27.27%				
MAR12540	Zone A1 - Final Hydrographic Survey		7	28-Nov-13	05-Dec-13	0%				
Dredging - Zone D										
MAR11880	Zone D - Remove existing rock armour [S8-S10]		24	30-Nov-13	30-Dec-13	0%				
MAR11900	Zone D - dredging [R8-R10]	5,700m3 @1400m3/d	18	31-Dec-13	21-Jan-14	0%				
Dredging - Zone CRIII										
CRIII - Temporary Pipe Pile Wave Wall										
MAR10022	CRIII - design of temporary pile wave wall - prepare and submit to ICE		83	01-Aug-13 A	22-Nov-13	0%				
MAR10026	CRIII - design of temporary pile wave wall - ICE check & issue cert		14	23-Nov-13	06-Dec-13	0%				
MAR10028	CRIII - design of temporary pile wave wall - Eng comment and approve		28	23-Nov-13	20-Dec-13	0%				
MAR10040	CRIII - temp pipe pile wall (1-30) - install 610 dia. pipe pile [30nos. @750c/c]	40 nos, 25m deep @4d; 3WF	30	21-Dec-13	28-Jan-14	0%				
Seawall Construction										
Seawall Construction - Zone C										
MAR11560	Zone C - temp. seawall - fill rubble mound to -4.0mPD	336m2x61=7056m3 @1300m3/d(16hrs)	16	27-Oct-13	11-Nov-13	0%				
MAR11610	Zone C - temp. seawall - place temp concrete block to +4.0mPD		18	12-Nov-13	29-Nov-13	0%				
MAR11615	Zone C - C4 unit - Grade 75 rockfill along C4 unit	57m2x105m=5985m3 @300m3/d	20	17-Oct-13	08-Nov-13	0%				
MAR11620	Zone C - WDII Box 1 temp SW - place rock mound	100m2x17m=1700m3 @1300m3/d(16hr)	8	09-Nov-13	18-Nov-13	0%				
MAR11660	Zone C - WDII Box 1 temp SW - place concrete block		8	19-Nov-13	27-Nov-13	0%				
Seawall Construction - Zone B										
MAR10980	Zone B - seawall - Type 7 - fill Grade 400	14,942m3 @1000m3/d	2	25-Oct-13	26-Oct-13	0%				
MAR11002	Zone B - seawall - Type 7 - fill Type A		2	27-Oct-13	28-Oct-13	0%				
MAR11004	Zone B - seawall - Type 7 - lay toe block & leveling stone		17	29-Oct-13	14-Nov-13	0%				
MAR11006	Zone B - seawall - Type 7 - install seawall block from -11.3 to -6.65mPD		8	15-Nov-13	22-Nov-13	0%				
MAR11009	Zone B - seawall - Type 7 - install seawall block from -6.65mPD to above	3 blk sw	7	23-Nov-13	29-Nov-13	0%				
MAR11040	Zone B - C4 unit - Grade 75 rockfill along C4 unit	5985m3 @300m3/d	20	17-Oct-13	08-Nov-13	0%				
MAR11060	Zone B - WDII Box 1 temp SW - place rock mound		8	09-Nov-13	18-Nov-13	0%				
MAR11080	Zone B - WDII Box 1 temp SW - place concrete block		8	19-Nov-13	27-Nov-13	0%				
MAR18100	Zone B - seawall - Type 5, 2N, 4 - fill Grade 400	14,942m3 @1000m3/d	7	27-Oct-13	02-Nov-13	0%				
MAR18120	Zone B - seawall - Type 5, 2N, 4 - fill Type A		2	03-Nov-13	04-Nov-13	0%				
MAR18140	Zone B - seawall - Type 5, 2N, 4 - lay toe block & leveling stone		11	05-Nov-13	15-Nov-13	0%				
MAR18150	Zone B - seawall - install caisson seawall no. 2N	delivery 8 Oct 13	3	16-Nov-13	18-Nov-13	0%				
MAR18180	Zone B - seawall - Type 5, 6 - fill Grade 400	14,942m3 @1000m3/d	5	16-Nov-13	20-Nov-13	0%				
MAR18200	Zone B - seawall - Type 5, 6 - fill Type A		2	21-Nov-13	22-Nov-13	0%				
MAR18220	Zone B - seawall - Type 5, 6 - lay toe block & leveling stone		12	23-Nov-13	04-Dec-13	0%				
MAR18222	Zone B - seawall - install block seawall type 5	3 blk sw	8	05-Dec-13	12-Dec-13	0%				



Activity ID	Activity Name	user_text2	Remaining Duration	Early Start	Early Finish	Activity % Complete	2013			
							Sep	Oct	Nov	Dec
MAR18224	Zone B - seawall - install block seawall type 6	3 blk sw	8	12-Dec-13	19-Dec-13	0%				
Seawall Construction - Zone A2										
MAR10720	Zone A2 - seawall - Type 2, 2L, 13 - fill Grade 400		12	23-Nov-13	04-Dec-13	0%				
MAR10722	Zone A2 - seawall - Type 2, 2L, 13 - lay toe block and leveling stone		12	05-Dec-13	16-Dec-13	0%				
MAR10740	Zone A2 - seawall - install Caisson Seawall no. 2L		2	17-Dec-13	18-Dec-13	0%				
MAR10760	Zone A2 - seawall - install Caisson Seawall no. 2		4	19-Dec-13	22-Dec-13	0%				
MAR10780	Zone A2 - seawall - install block seawall type 4		12	19-Dec-13	30-Dec-13	0%				
MAR10800	Zone A2 - seawall - install block seawall type 13		12	19-Dec-13	30-Dec-13	0%				
Seawall Construction - Zone A1										
MAR10290	Zone A1 - seawall - Type 1R, 1 - fill Grade 400		40	31-Dec-13	08-Feb-14	0%				
Filling										
Filling - Zone C										
MAR11700	Zone C - public fill [T4-T7, U4-U7] (bridge area)	52,000m3 @1800m3/d	29	27-Nov-13	02-Jan-14	0%				
MAR11720	Zone C - public fill [R3-R6] -14.0 to 4.0mPD (25m control zone)	73,000m3 @1800m3/d	39	30-Nov-13	17-Jan-14	0%				
Filling - Zone B										
MAR11100	Zone B - Public Fill [Q2-Q5] (25m control zone) up to 4.0mPD	65,500m3 @1800m3/d	39	30-Nov-13	17-Jan-14	0%				
Abandoning Submarine Sewage Outfall and Cross Harbour Watermain										
MAR12450	abandoning submarine sewage outfall - remove section under caisson 2L & 2		22	13-Sep-13*	10-Oct-13	0%				
MAR12452	abandoning submarine sewage outfall - remove remaining outfall section		22	11-Oct-13	06-Nov-13*	0%				
MAR12454	abandoning submarine sewage outfall - CCTV		14	13-Sep-13	30-Sep-13	0%				
MAR12456	abandoning submarine sewage outfall - seal up pipe and trial grouting		25	02-Oct-13	31-Oct-13	0%				
MAR12460	abandoning submarine sewage outfall - grouting		30	01-Nov-13	05-Dec-13	0%				
MAR12462	complete watermain cut off (by others)		0		19-Sep-13*	0%				
MAR12463	abandoning watermain - TTA		1	21-Sep-13	21-Sep-13	0%				
MAR12464	abandoning watermain - remove existing valve		6	23-Sep-13	28-Sep-13	0%				
MAR12465	abandoning watermain - pump away water inside pipes		12	30-Sep-13	15-Oct-13	0%				
MAR12466	abandoning watermain - seal up watermain and grout (portion under seawall)		17	16-Oct-13	04-Nov-13	0%				
MAR12467	abandoning watermain - seal up watermain and grout (portion to south of CWB tunnel)		17	28-Oct-13	15-Nov-13	0%				
MAR12480	abandoning watermain - remove remaining watermain within CWB tunnel area		12	13-Nov-13	26-Nov-13	0%				
Works for Section Completion										
Construction										
Box Culvert La, L1 & FRP-L Construction										
Sec VI A - Box Culvert La bay 1-3 and Roadwork										
Relocation of Kiosks										
CUL10127	Sec VI A - Area 1 - establish TTA		1	16-Sep-13	16-Sep-13	0%				
CUL10129	Sec VI A - Area 1 - remove existing paving block (on footpath)		2	17-Sep-13	18-Sep-13	0%				
CUL10130	Sec VI A - Area 1 - trench excavation		4	21-Sep-13	25-Sep-13	0%				
CUL10132	Sec VI A - Area 1 - cable and lan line laying (by UU)		3	26-Sep-13	28-Sep-13	0%				
CUL10134	Sec VI A - Area 1 - backfill		2	30-Sep-13	02-Oct-13	0%				
CUL10136	Sec VI A - Area 1 - reinstate paving block		2	03-Oct-13	04-Oct-13	0%				
CUL10138	Sec VI A - Area 1 - relocate kiosk		2	05-Oct-13	07-Oct-13	0%				



Activity ID	Activity Name	user_text2	Remaining Duration	Early Start	Early Finish	Activity % Complete	2013			
							Sep	Oct	Nov	Dec
Set Back Footpath										
CUL10142	establish TTA		1	08-Oct-13	08-Oct-13	0%				
CUL10144	Remove ext. Paving Block & Road Kerb (55m long)		2	09-Oct-13	10-Oct-13	0%				
CUL10146	construct Road Kerb for offset footpath		4	11-Oct-13	16-Oct-13	0%				
CUL10148	make good sub-grade and lay paving steel plates		4	17-Oct-13	21-Oct-13	0%				
CUL10150	Erect temp. Ligthning Pole		1	22-Oct-13	22-Oct-13	0%				
CUL10152	Road Marking		1	23-Oct-13	23-Oct-13	0%				
Construct Box Culvert La										
CUL10162	Hoarding Erection		1	24-Oct-13	24-Oct-13	0%				
CUL10164	Trial Pit Excavation (to locate the ext. Culvert L)		6	25-Oct-13	31-Oct-13	0%				
CUL10166	Installation of Sheetpile (total 110m long)		5	01-Nov-13	06-Nov-13	0%				
CUL10480	Sec VI A - Area 1 - Culvert L bay 1-3 - excavation and ELS installation	2048m3 @400m3/d; ELS 1m	36	07-Nov-13	18-Dec-13	0%				
CUL10520	Sec VI A - Area 1 - Culvert L bay 1-3 - construct bay 3 - base slab		11	19-Dec-13	03-Jan-14	0%				
CUL10540	Sec VI A - Area 1 - Culvert L bay 1-3 - construct bay 3 - wall		9	04-Jan-14	14-Jan-14	0%				
Section VI C - Area 3, 6, 8A & 8C										
Area 8A & 8C - Seawall Modification for WDII Construction										
S0721080	Sec VI C - Seawall Mod for Box 1 - method statement and temp work design - prepare and submit to ICE		34	15-Jul-13 A	04-Oct-13	43.33%				
S0721082	Sec VI C - Seawall Mod for Box 1 - method statement and temp work design - ICE comment and issue check cert		14	05-Oct-13	22-Oct-13	0%				
S0721084	Sec VI C - Seawall Mod for Box 1 - method statement and temp work design - Eng comment and approve		28	05-Oct-13	07-Nov-13	0%				
S0721086	Sec VI C - Seawall Mod for Box 1 - method statement and temp work design - MTR comment and approve		30	05-Oct-13	09-Nov-13	0%				
S0721090	Sec VI C - Seawall Mod for Box 1 - Tree Felling/Transplanting at Area 8A		90	02-Sep-13	18-Dec-13	0%				
S0721100	Sec VI C - Seawall Mod for WDII - Trim Down Existing Ground to +3mPD		30	02-Nov-13	06-Dec-13	0%				
S0721200	Sec VI C - Seawall Mod for WDII - Construct Temp. R.C. wall		52	26-Nov-13	28-Jan-14	0%				
S920168	Temp work design and method statement for MTR pump house stabilization		33	01-Sep-13	03-Oct-13	0%				
S920170	Sec VI C - MTRC pump house stabilization for WDII - plant mobilization		30	04-Oct-13	08-Nov-13	0%				
S920190	Sec VI C - MTRC pump house stabilization for WDII - place temp surcharge to pump room		30	11-Nov-13	14-Dec-13	0%				
Section VI D - Area 8B & 10										
WDII Box 1										
S0721020	Sec VI D - WD II Box 1 - method statement and temp work design - prepare and submit		91	03-Jul-13 A	30-Nov-13	49.44%				
S0721040	Sec VI D - WD II Box 1 - method statement and temp work design - ICE check and issue check cert		14	01-Dec-13	14-Dec-13	0%				
S0721060	Sec VI D - WD II Box 1 - method statement and temp work design - Engineer comment and approve		28	01-Dec-13	28-Dec-13	0%				
S0721070	Sec VI D - WD II Box 1 - method statement and temp work design - MTR comment and approve		52	29-Dec-13	18-Feb-14	0%				
S0722000	Sec VI D - WD II Box 1 - Temp. Protection to Existing Bored Piles		60	30-Dec-13	15-Mar-14	0%				
Section VIII - Landscape Softworks										
Soft Landscaping Works										
SVIII10020	Sec VIII - Tree Felling/Transplanting at Portion 2 & 2A		90	02-Sep-13	18-Dec-13	0%				

Activity ID	Activity Name	Original Duration	Start	Finish	Total Float	Free Float	2013															
							September				October				November				December			
							01	08	15	22	29	06	13	20	27	03	10	17	24	01	08	15
HY/2010/08: CWB-SR8 Three Months Rolling Programme_updated up to 20130920																						
Works in SR8																						
Ground Investigation Works on IEC																						
A2370	Predrilling	16	08-Jul-13 A	04-Sep-13 A																		
A2400	Completion of predrilling @ IEC	0		04-Sep-13 A																		
SR8 ZONE 1B, Cha.511.654 to Ch.490																						
Initial Works																						
SR8_1140	Utility Diversion - Telecom Cables along Seafront	12	18-Sep-13 A	11-Nov-13	124	0																
SR8_1150	Utility Diversion - HV Lines 11kv Cables along Seafront	12	18-Sep-13 A	11-Nov-13	124	0																
SR8_1135	Diversion of footpath	30	24-Sep-13 A	28-Oct-13	124	0																
SR8_1120	Install new traffic signs prior to removal of existing gantry	6	24-Sep-13 A	27-Sep-13	124	0																
SR8_1160	Utility Diversion - Water Mains along Seafront	12	02-Nov-13	15-Nov-13	124	0																
SR8_1170	Utility Diversion - Town Gas Pipes along Sea Front	18	16-Nov-13	06-Dec-13	182	182																
Sheet Piling Works Stage 1A at Zone 1B (VP Road Seaside)																						
A2700	Mobilisation of Sheet Piling Works	7	16-Nov-13	23-Nov-13	124	0																
A2710	Carry out pre-boring for sheet piling works (Stage 1A - 14 holes)	14	25-Nov-13	10-Dec-13	124	0																
A2720	Install Sheet Piles Stage 1A	11	11-Dec-13	23-Dec-13	124	0																
A2730	Demobilisation Stage 1A	7	24-Dec-13	03-Jan-14	124	0																
Pipe Piling Works Stage 1A at Zone 1B (VP Road Seaside)																						
A25220	Mobilisation of Pipet Piling Works Stage 1A	7	04-Jan-14	11-Jan-14	124	0																
A25230	Install Pipe Piles Stage 1A (9 piles)	12	13-Jan-14	25-Jan-14	124	0																
A25240	Carry out Toe Grouting Stage 1A (7 holes)	11	27-Jan-14	11-Feb-14	124	0																
VP / IEC West Bound (SR8 ZONE 6, Ch.430 to Ch.420)																						
A25200	Commencement of Pipe pile Works	0	26-Oct-13*		218	218																
Stage 1A1																						
A3040	Mobilisation for Sheet Piling Works	10	30-Oct-13	09-Nov-13	17	0																
A3050	Carry out Pre-boring for Sheet Piling works	6	11-Nov-13	16-Nov-13	17	0																
A3060	Install Sheet Piles	30	18-Nov-13	21-Dec-13	17	0																
A3080	Test boring	10	23-Dec-13	06-Jan-14	17	0																
Stage 1A2																						
A3090	Carry out Pre-boring for Sheet Piling works	8	07-Jan-14	15-Jan-14	17	0																
A3100	Install Sheet Piles	26	16-Jan-14	18-Feb-14	17	0																
Tree Transplanting, up to 400mm dia																						
Tree Zones 1-5																						
A2460	Trees transplanting/tree removal - Zones 1 & 2	8	21-May-13 A	18-Oct-13	212	0																
A2440	Trees transplanting/tree removal - Zones 3, 4 & 5	12	06-Aug-13 A	05-Oct-13	-8	0																
Ground Investigation and Instrumentation																						
A3020	Installation of Monitoring Instruments	53	05-Jun-13 A	17-Sep-13 A																		
A3010	Ground Investigation Works	72	06-Jun-13 A	14-Sep-13 A																		
A3030	Carry Out Site Formation	19	07-Oct-13*	29-Oct-13	17	0																
Victoria Park Side (VP Road & IEC West Bound)																						
A3070	Demobilisation of Sheet Piling Works	7	23-Dec-13	02-Jan-14	162	162																
Tree Transplanting, 400 to 500mm dia. (6 nos.)																						
A1840	Root cut resting period	50	24-May-13 A	24-Sep-13	-123	0																
A1850	Excavation & root pruning on next 2 opposite sides	1	31-May-13 A	25-Sep-13	-123	0																
A1860	Root cut resting period	52	01-Jun-13 A	27-Nov-13	-123	0																



中國建築工程(香港)有限公司
CHINA STATE CONSTRUCTION ENGRG. (HONG KONG) LTD.

- Remaining Level of Effort
- Actual Work
- Remaining Work
- Critical Remaining Work
- Milestone

Page 1 of 3

Contract No. HY/2010/08: Central - Wanchai Bypass Tunnel +(Slip Road 8 Section) - 3 Months Rolling Programme - updated 20 Sep 2013

Date	Revision	Checked	Approved
24-Jul-13	Updated to 20th July 2013	DML/WC	
20-Aug-13	Updated to 20th August 2013	DML/WC	
23-Sep-13	Updated to 20th September 2013	DML	

Activity ID	Activity Name	Original Duration	Start	Finish	Total Float	Free Float	2013																			
							September				October				November				December							
							01	08	15	22	29	06	13	20	27	03	10	17	24	01	08	15	22	29		
A1870	Excavation & root pruning on last 2 opposite sides	1	28-Jun-13 A	28-Nov-13	-123	0															Excavation & root pruning on last 2 opposite sides					
A1880	Root cut resting period	52	29-Jun-13 A	04-Feb-14	-123	0															Root cut resting period					
A1895	Trees transplanting/tree removal	18	07-Aug-13 A	25-Feb-14	-123	0															Trees transplanting					
SR8 Zone 8,																										
Tree Zone 19																										
A1170	Excavation & root pruning on next 2 opposite sides	1	20-Aug-13 A	05-Sep-13 A																	Excavation & root pruning on next 2 opposite sides					
A1230	Root cut resting period	52	21-Aug-13 A	22-Nov-13	137	0															Root cut resting period					
A1240	Excavation & root pruning on last 2 opposite sides	1	22-Aug-13 A	23-Nov-13	137	0															Excavation & root pruning on last 2 opposite sides					
A1250	Root cut resting period	52	25-Nov-13	27-Jan-14	137	0															Root cut resting period					
A1290	Trees transplanting / tree removal	4	28-Jan-14	04-Feb-14	137	137															Trees transplanting					
SR8 ZONE 7, Cha.420 to Ch.317.548																										
Temporary Traffic Diversion																										
A2610	Site Ingress / Egress near Tree Zone 5	12	19-Aug-13 A	19-Sep-13 A																	Site Ingress / Egress near Tree Zone 5					
A2620	Site Ingress / Egress near Tree Zone 9	4	21-Sep-13*	25-Sep-13	230	0															Site Ingress / Egress near Tree Zone 9					
A2630	Site Ingress / Egress near Tree Zone 1	7	21-Sep-13	28-Sep-13	239	239															Site Ingress / Egress near Tree Zone 1					
A2640	Tree Felling at Tsing Fung Street	6	04-Oct-13*	10-Oct-13	230	230															Tree Felling at Tsing Fung Street					
Utility Provision and Utility Diversion at VP																										
A2515	Construction of Transformer Pillar in VP (Tsing Fung Street)	18	10-Sep-13 A	12-Oct-13	204	0															Construction of Transformer Pillar in VP (Tsing Fung Street)					
A2505	Commence Utility Works at VP	0	10-Sep-13 A																		Commence Utility Works at VP					
A2520	Diversion of HEC 11kv Cables	30	21-Sep-13*	28-Oct-13	204	0															Diversion of HEC 11kv Cables					
A2530	Water Supply Provision	12	29-Oct-13	11-Nov-13	204	0															Water Supply Provision					
A2540	Power Supply Provision	12	29-Oct-13	11-Nov-13	204	204															Power Supply Provision					
Tree Transplanting, up to 400mm dia. (44 nos.)																										
Tree Zones 6, 7, 8, 10 & 11																										
A1510	Root cut resting period	25	28-Jul-13 A	11-Sep-13 A																	Root cut resting period					
A2470	Trees transplanting/tree removal - Zones 6, 7 & 8	12	04-Sep-13 A	01-Nov-13	212	212															Trees transplanting/tree removal - Zones 6, 7 & 8					
A25180	Trees transplanting/tree removal - Zone 10 & 11	6	12-Sep-13 A	27-Sep-13	45	16															Trees transplanting/tree removal - Zone 10 & 11					
Tree Transplanting, 400 to 500mm dia. (8 nos.)																										
A25120	Trees transplanting/tree removal	12	21-May-13 A	30-Jan-14	-57	0															Trees transplanting/tree removal					
A1910	Excavation & root pruning on next 2 opposite sides	1	29-Jul-13 A	21-Sep-13	-57	0															Excavation & root pruning on next 2 opposite sides					
A1920	Root cut resting period	50	23-Sep-13	21-Nov-13	-57	0															Root cut resting period					
A1930	Excavation & root pruning on last 2 opposite sides	1	22-Nov-13	22-Nov-13	-57	0															Excavation & root pruning on last 2 opposite sides					
A1940	Root cut resting period	50	23-Nov-13	23-Jan-14	-57	0															Root cut resting period					
A2510	Completion of trees transplanting @ Zone 7 along SR8	0		30-Jan-14*	-57	138															Completion of trees transplanting @ Zone 7 along SR8					
Tree Transplanting, above 500mm dia. (7 nos.)																										
A1960	Root cut resting period	75	12-Jun-13 A	07-Nov-13	41	0															Root cut resting period					
A1970	Excavation & root pruning on next 2 opposite sides	1	08-Nov-13	08-Nov-13	41	0															Excavation & root pruning on next 2 opposite sides					
A1980	Root cut resting period	77	09-Nov-13	13-Feb-14	41	0															Root cut resting period					
VP / IEC East Bound (SR8 ZONE 6, Ch.430 to Ch.420)																										
Stage 1																										
A2435	Construction working platform	4	09-Sep-13 A	21-Nov-13	90	0															Construction working platform					
A2410	Erect walkway along seawall	28	21-Sep-13	25-Oct-13	90	0															Erect walkway along seawall					
A2430	Carry out utilities diversion (HEC 11kVa cables)	19	26-Oct-13	16-Nov-13	90	0															Carry out utilities diversion (HEC 11kVa cables)					
A2450	Carry out utilities diversion (Water Main, Telecom)	13	22-Nov-13	06-Dec-13	90	0															Carry out utilities diversion (Water Main, Telecom)					
A2480	Mobilization for sheet piling and pipe piling works	9	07-Dec-13	17-Dec-13	90	0															Mobilization for sheet piling and pipe piling works					
Stage 1A																										
A2500	Carry out pre-boring for sheet piling work	7	18-Dec-13	27-Dec-13	90	0															Carry out pre-boring for sheet piling work					
A2600	Pre-boring SPW for Treatment for Cable Trough	14	28-Dec-13	14-Jan-14	90	0															Pre-boring SPW for Treatment for Cable Trough					



中國建築工程(香港)有限公司
CHINA STATE CONSTRUCTION ENGRG. (HONG KONG) LTD.

- Remaining Level of Effort
- Actual Work
- Remaining Work
- Critical Remaining Work
- Milestone

Page 2 of 3

Contract No. HY/2010/08: Central - Wanchai Bypass Tunnel +(Slip Road 8 Section) - 3 Months Rolling Programme - updated 20 Sep 2013

Date	Revision	Checked	Approved
24-Jul-13	Updated to 20th July 2013	DML/WC	
20-Aug-13	Updated to 20th August 2013	DML/WC	
23-Sep-13	Updated to 20th September 2013	DML	

Activity ID	Activity Name	Original Duration	Start	Finish	Total Float	Free Float	2013																		
							September					October				November				December					
							01	08	15	22	29	06	13	20	27	03	10	17	24	01	08	15	22	29	
A2560	Install sheet piles	8	15-Jan-14	23-Jan-14	90	0																			
A2650	Install sheet piles for Treatment for Cable Trough	16	24-Jan-14	14-Feb-14	90	0																			
Children's Playground																									
A1140	Tree felling	11	13-Sep-13 A	13-Sep-13 A																					
A1160	Demolition of existing pond	16	14-Sep-13 A	10-Oct-13	180	0																			
A1190	Backfill and paving of Base Slab	12	11-Oct-13	25-Oct-13	180	0																			
A1150	Tree protection	30	11-Oct-13*	15-Nov-13	200	22																			
A1200	Construction of Foundation	14	26-Oct-13	11-Nov-13	180	0																			
A1210	Construction of Drainage	12	12-Nov-13	25-Nov-13	180	0																			
A1220	Rubber Mat Installation	12	26-Nov-13	09-Dec-13	180	180																			
A2490	Start of Re provisioning works for CP	0	12-Dec-13*		178	178																			
Inside Victoria Park																									
A1350	Chain link fence (Turtle Pond) and Demolition commences	4	19-Aug-13 A	13-Sep-13 A																					
Works for Public Works Regional Laboratory (North Lantau)																									
Transformer Room																									
PWRL_0770	Application for Permanent CLP Power (900A)	1	21-Sep-13*	21-Sep-13	0	0																			
PWRL_0780	CLP Vetting and Approval	30	23-Sep-13	29-Oct-13	0	0																			
PWRL_0790	Construction of RC Transformer Room	80	30-Oct-13	06-Feb-14	0	0																			
Laboratory Main Building																									
PWRL_0385	Laboratory equipment & furniture installation	7	20-Jul-13 A	17-Sep-13 A																					
Dangerous Goods Store																									
PWRL_0530	Steel fixing & concreting of roof	3	20-Aug-13 A	14-Sep-13 A																					
PWRL_0520	Steel fixing & concreting of wall	6	20-Aug-13 A	14-Sep-13 A																					
PWRL_0535	E&M installation (wiring, lighting fixtures, AC unit, etc.)	8	21-Sep-13	30-Sep-13	231	0																			
PWRL_0550	Finishing Works	11	26-Sep-13	09-Oct-13	231	0																			
PWRL_0540	Metal works (door, grill, grating etc.)	9	28-Sep-13	09-Oct-13	231	0																			
PWRL_0560	Waterproofing to roof	1	08-Oct-13	09-Oct-13	231	0																			